

**CURIOUS FORM**

Art | Fabrication | Design

# **13th Street Roundabout**

Fort Lauderdale, FL

## **RADIANCE**

William Nemitoff



## CONCEPT NARRATIVE

### Artistic Vision

Inspired by a Tequesta understanding of the self as existing through sight, shadow, and reflection, this sculpture explores how perception and perspective shape experience. The work uses color, light, and geometry to create a form that changes as viewers move around it, offering a different visual reading from every angle.

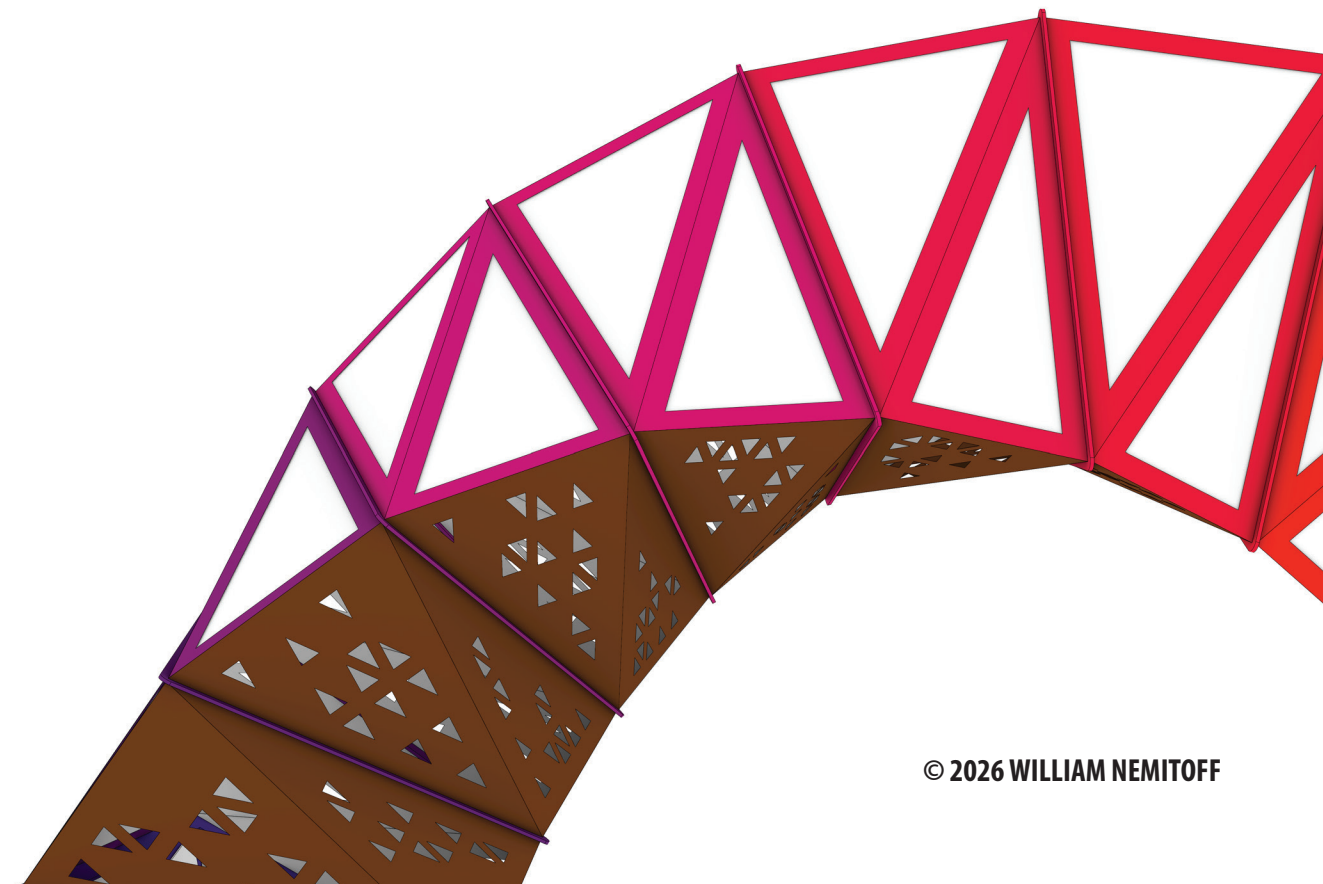
A vibrant spectrum of color wraps the structure, referencing the diverse and inclusive residents of Middle River Terrace and celebrating the many identities that coexist within the neighborhood. Throughout the day, the sculpture casts shifting shadows and subtle reflections, encouraging moments of pause and awareness. By night, the sight ring glows from within with a slowly shifting cycle of color.

Designed as a welcoming landmark, the piece reflects the energy, diversity, and evolving character of the community through an abstract, contemporary form.

### Material Intent

The materials reflect the concept of self:

- Eye/sight = Powder-coated Stainless Steel + Polycarbonate + Led Lights
- Shadow = Corten Steel
- Reflection = Mirror Stainless Steel







© 2025 Google

© 2026 WILLIAM NEMITOFF

# MATERIALS

## POLYCARBONATE

Superior impact resistance makes polycarbonate virtually unbreakable. High light diffusion allows for dynamic visual effects.



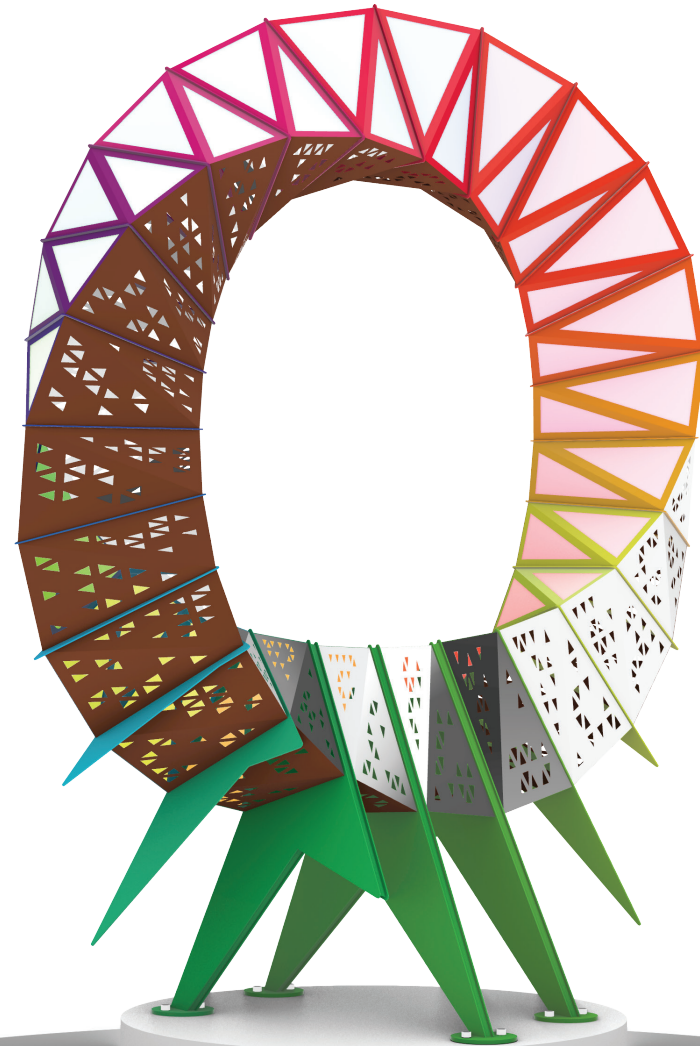
## RGB LED LIGHTS

Led lights are programmable to have a custom lighting program to accentuate the shape of the sculpture. The polycarbonate diffuses the lights for a soft glow.



## CONCRETE

The structural concrete footing doubles as a design feature, raising the sculpture higher to give it more presence.



## MIRROR POLISHED STAINLESS STEEL

Marine grade stainless steel will not rust when left exposed to the elements. The mirrored finish will reflect the environment.



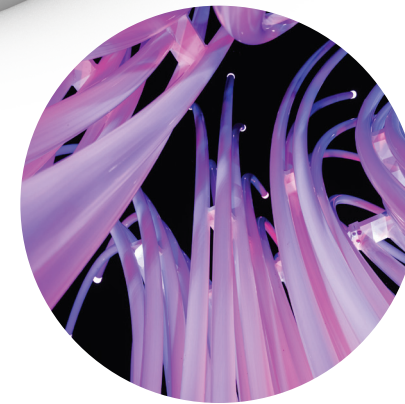
## CORTEN STEEL

Weathering steel develops a stable, rust-like protective layer (patina) when exposed to weather, eliminating the need for painting and protecting the underlying metal from further corrosion.

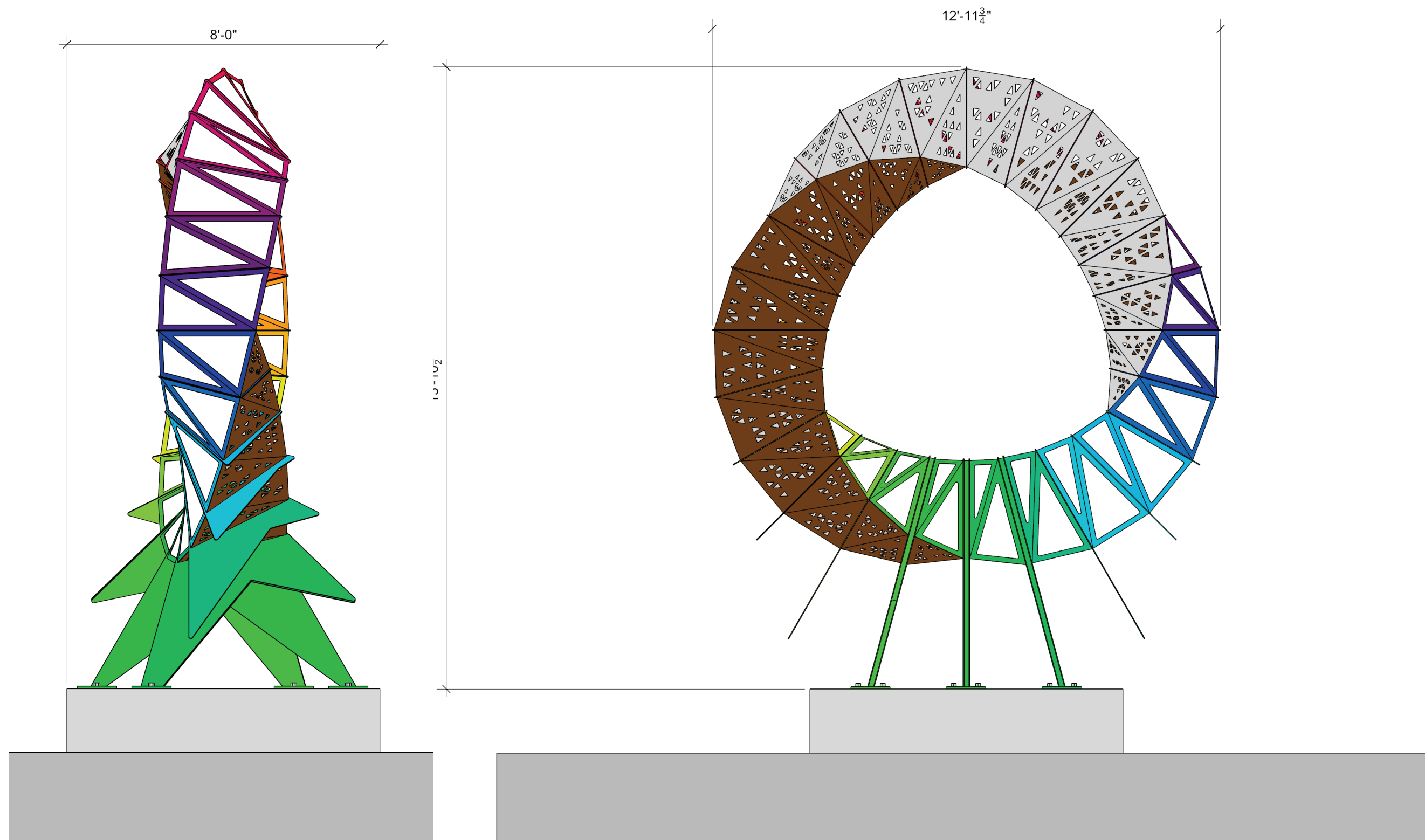


## POWDER COATING

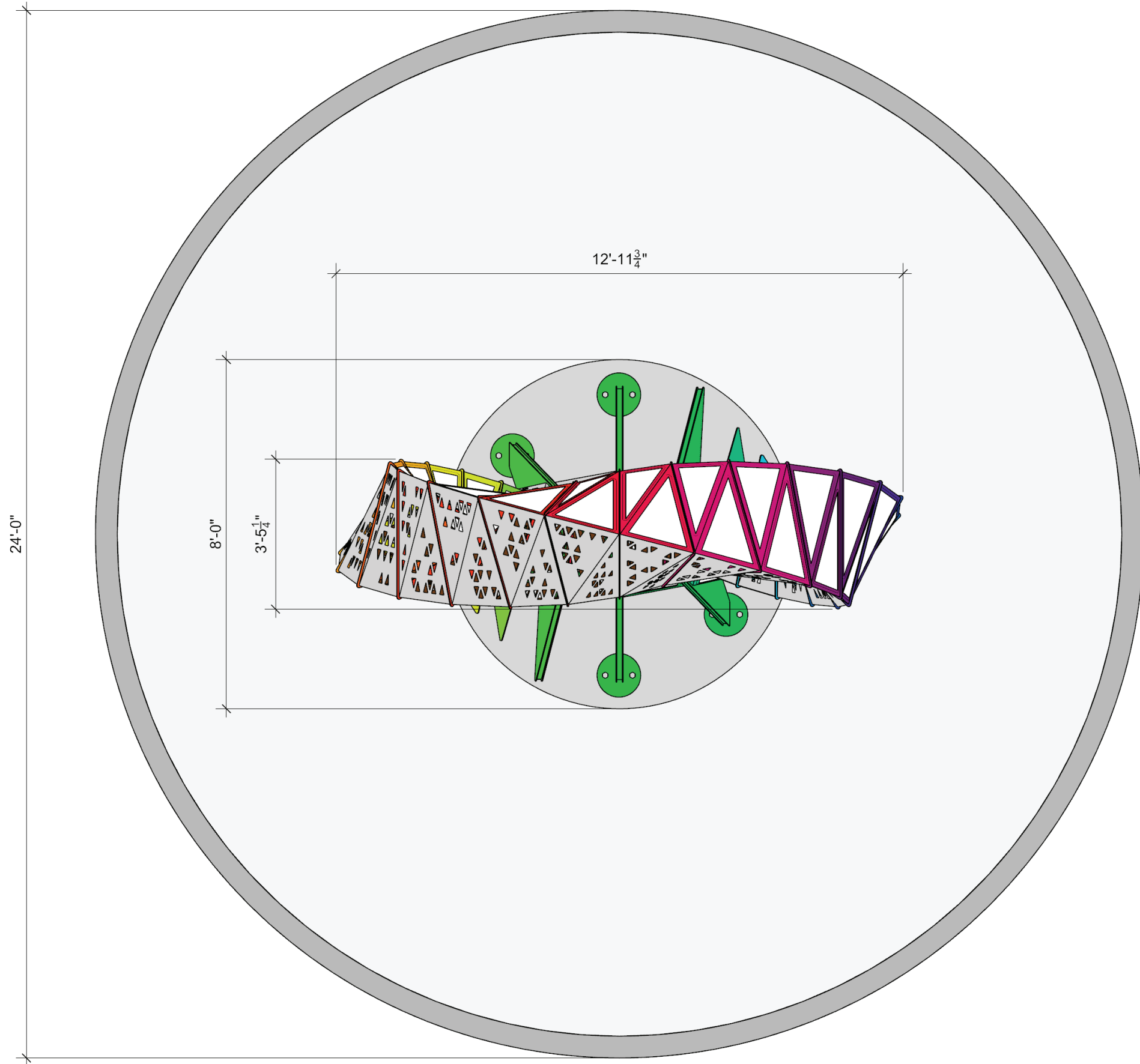
Powder coating is extremely durable, long-lasting surface resistant to chipping, scratching, fading, and corrosion. When architectural specs are used colorfastness can last 10-15 years



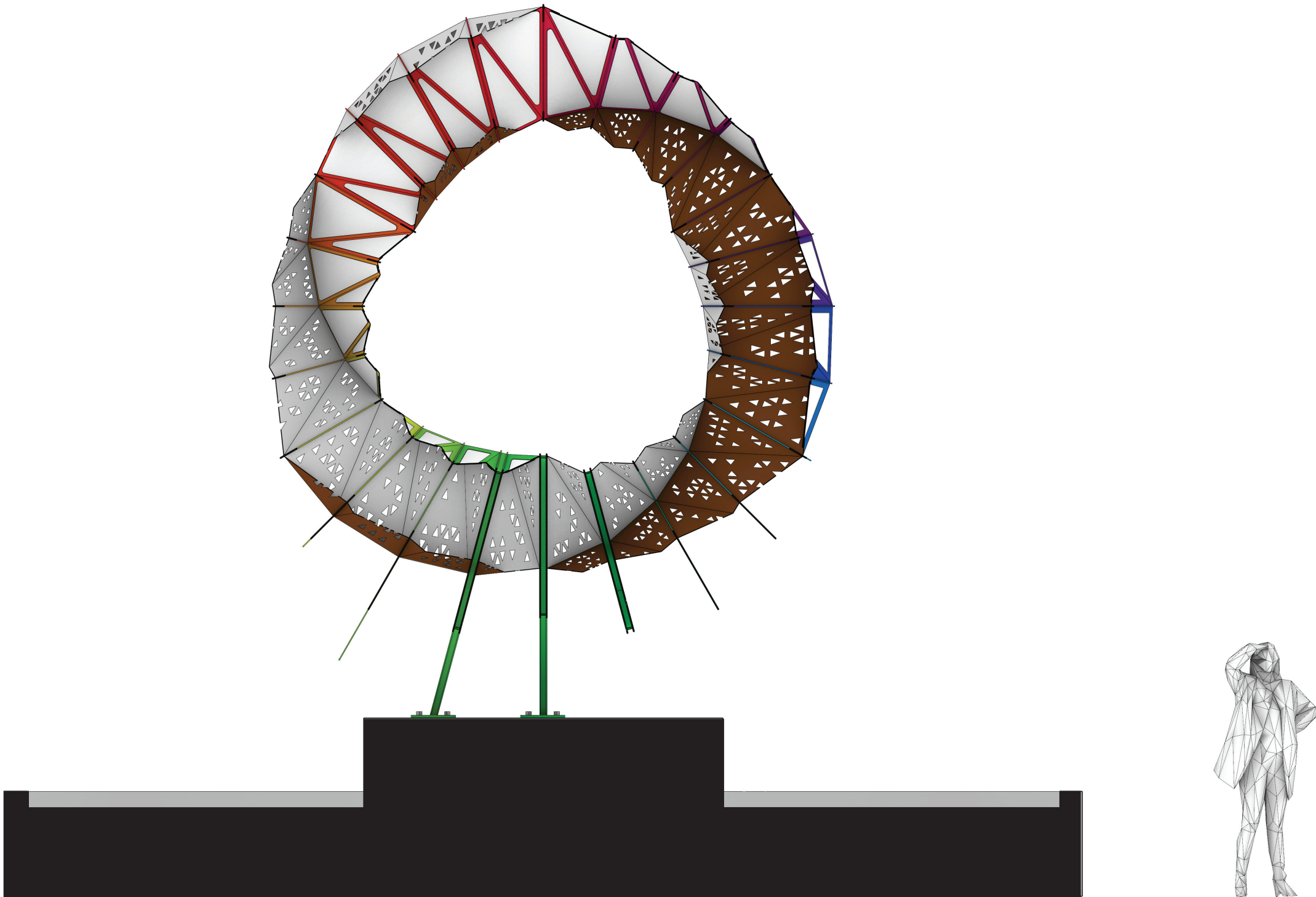
# ELEVATION



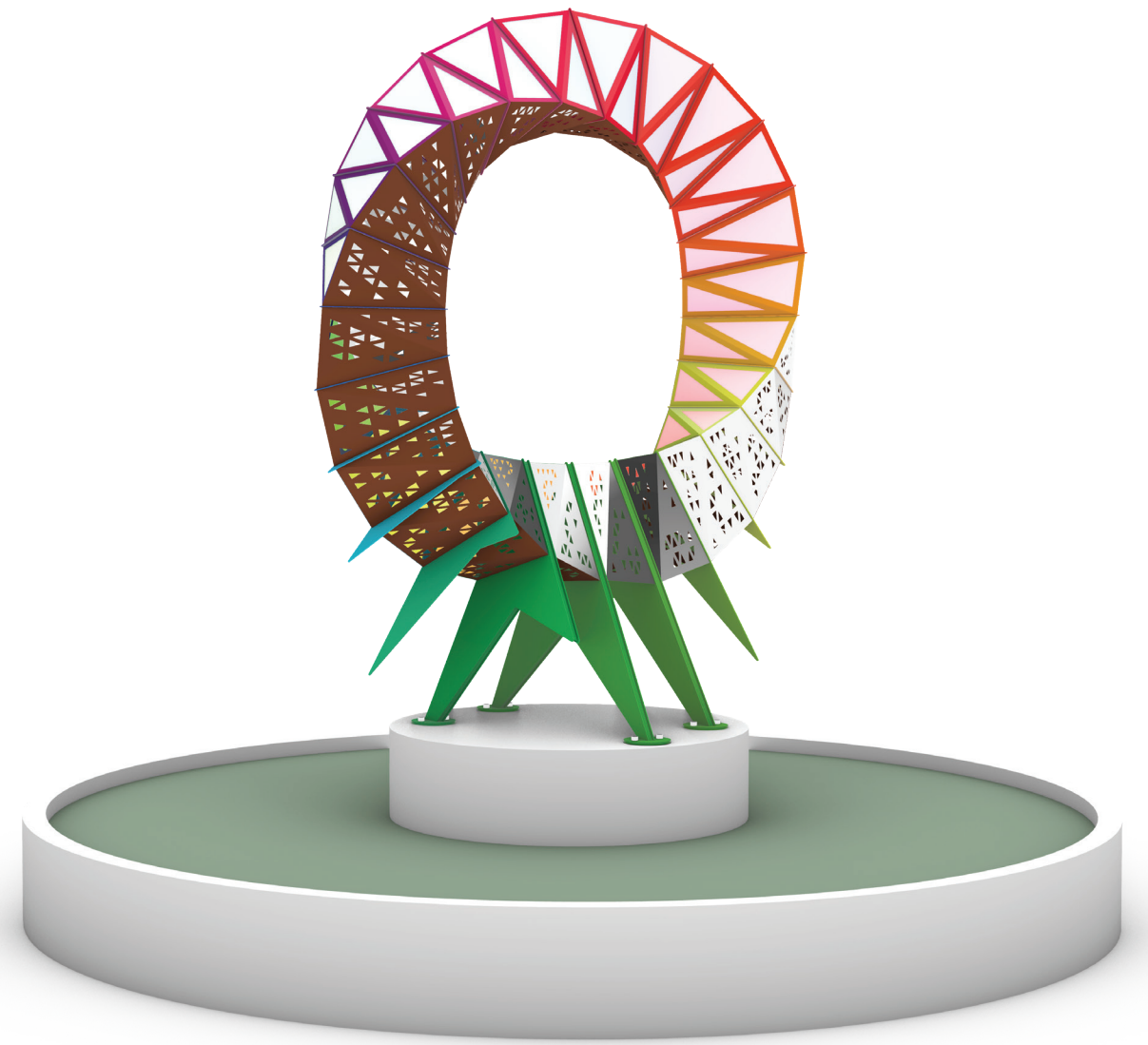
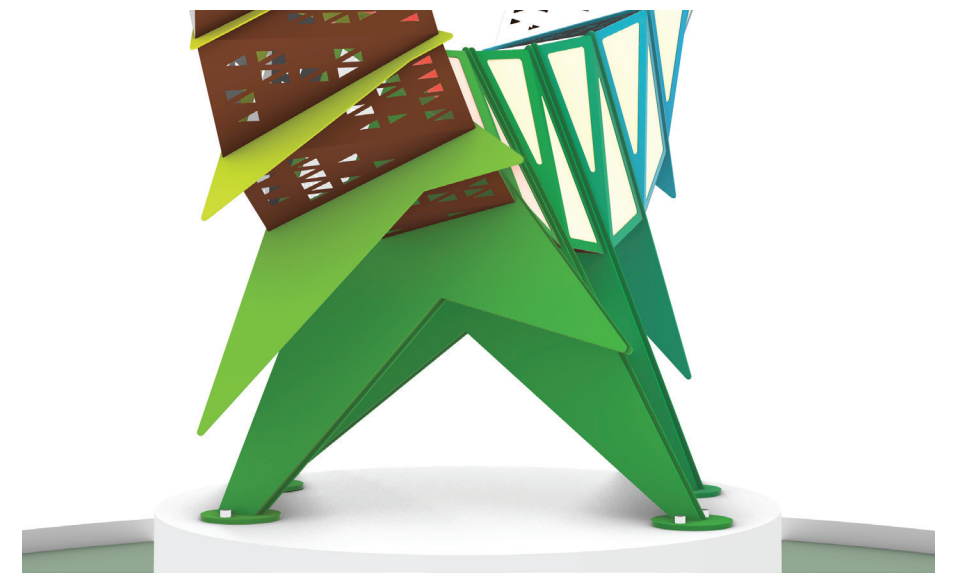
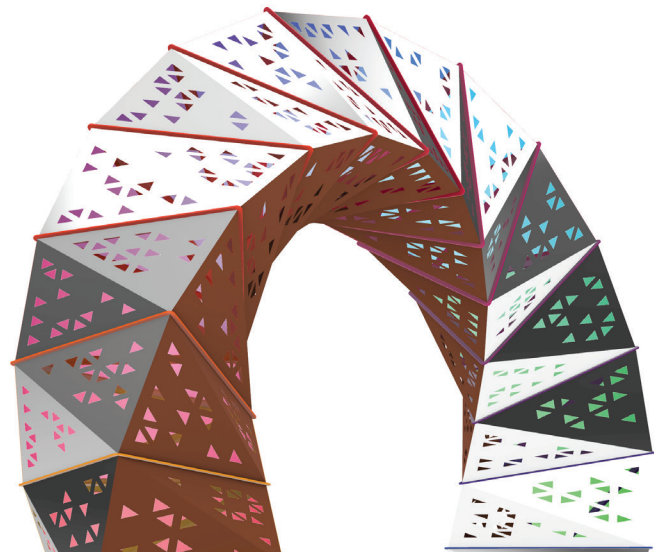
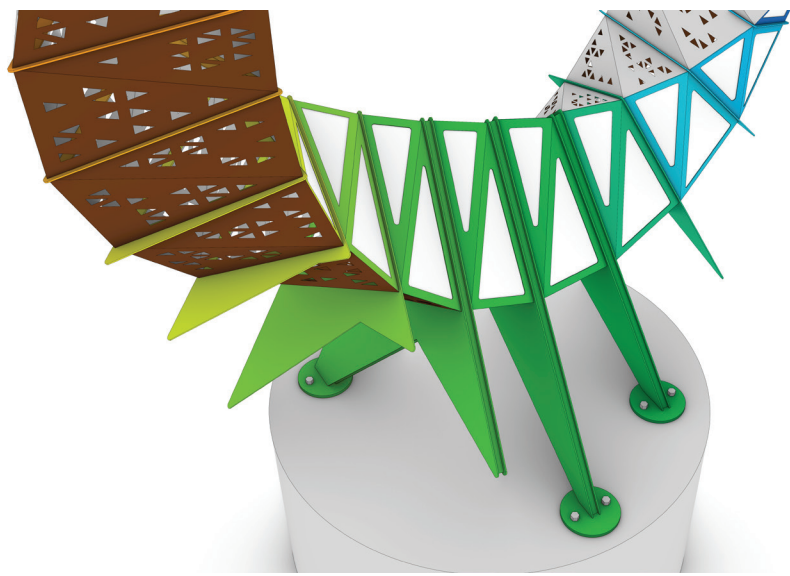
# PLAN



SECTION



# DETAILS



# BUDGET | Preliminary

The preliminary project budget allocates the available funds to fully develop and implement the artwork shown in the accompanying drawings. An 8% contingency is included to cover further refinements and prototypes of the artwork that are likely to occur in the design development stage.

| PRELIMINARY BUDGET                      |  |               |
|---|--|---------------|
| <b>Materials</b>                        |  | <b>33000</b>  |
|   | Stainless Steel                        |               |
|   | Corten Steel                           |               |
|   | Polycarbonate                          |               |
|   | Electrical + Lighting Hardware         |               |
|   | Consumables                            |               |
|   | Structural Hardware                    |               |
| <b>Off-site Fabrication + Equipment</b> |  | <b>55000</b>  |
|   | Structural Fabrication and Assembly    |               |
|   | Powder Coating                         |               |
|   | Lighting Fabrication                   |               |
| <b>On-site Processes + Installation</b> |  | <b>15000</b>  |
|   | Foundation                             |               |
|   | Installation Onsite                    |               |
|   | Heavy Equipment                        |               |
|   | Onsite Labor                           |               |
| <b>Management + Engineering</b>         |  | <b>17000</b>  |
|   | Artist Fee (Design + Develop + Manage) |               |
|   | Engineering                            |               |
| <b>Travel + Transportation</b>          |  | <b>6000</b>   |
|   | Artist Travel                          |               |
|   | Transportation                         |               |
| <b>Miscellaneous Costs</b>              |  | <b>14000</b>  |
|   | Photo and Video Documentation          |               |
|   | Credit Plaque                          |               |
|   | Contingency (8%)                       |               |
| <b>Project Total:</b>                   |  | <b>140000</b> |

# TIMELINE | Preliminary

|  |          |
|--|----------|
| Final Design Development + Engineering | 2 months |
| Prototyping + Permits                  | 1 month  |
| Fabrication                            | 6 months |
| Foundation                             | 1 month  |
| Transportation + Installation          | 1 month  |
| Final Approval + Documentation         | 1 month  |

Many of these processes will occur concurrently. Final completion is expected by within one year.

# MAINTENANCE

Visually inspect yearly.  
Clean with mild detergent as needed.





© 2025 Google

© 2026 WILLIAM NEMITOFF



**CURIOUS FORM**

Art | Fabrication | Design

# **13th Street Roundabout**

Fort Lauderdale, FL

# **PRISMATIC PETALS**

William Nemitoff

# CONCEPT NARRATIVE

## Artistic Vision

Inspired by a Tequesta understanding of the self as existing through sight, shadow, and reflection, this sculpture explores how perception and perspective shape experience, while celebrating local flora. The work uses color, light, and geometry to create a form that changes as viewers move around it, offering a different visual reading from every angle.

A vibrant spectrum of color wraps the structure, referencing the diverse and inclusive residents of Middle River Terrace and celebrating the many identities that coexist within the neighborhood. Throughout the day, the sculpture casts shifting shadows and subtle reflections, encouraging moments of pause and awareness. The dichroic outer flowers cast different colors during different times of day, creating a soft diffusion on the white polycarbonate of the inner flower. At night integrated led lights illuminate the artwork with a gently shifting rainbow glow.

Designed as a welcoming landmark, the piece reflects the energy, diversity, and evolving character of the community through an abstract, contemporary form.

## Material Intent

The materials reflect the concept of self:

|            |   |  |
|------------|---|--|
| Eye/sight  | = | Powder-coated Stainless Steel + Polycarbonate + Led Lights |
| Shadow     | = | Corten Steel   |
| Reflection | = | Mirror Stainless Steel                                     |
| Change     | = | Dichroic Polycarbonate                                     |





# MATERIALS

## POLYCARBONATE

Superior impact resistance makes polycarbonate virtually unbreakable. High light diffusion allows for dynamic visual effects.



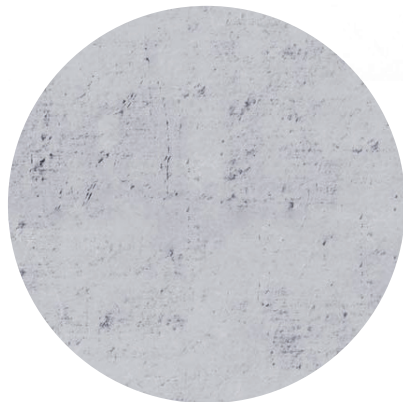
## RGB LED LIGHTS

Led lights are programmable to have a custom lighting program to accentuate the shape of the sculpture. The polycarbonate diffuses the lights for a soft glow.



## CONCRETE

The structural concrete footing doubles as a design feature, raising the sculpture higher to give it more presence.



## MIRROR POLISHED STAINLESS STEEL

Marine grade stainless steel will not rust when left exposed to the elements. The mirrored finish will reflect the environment.



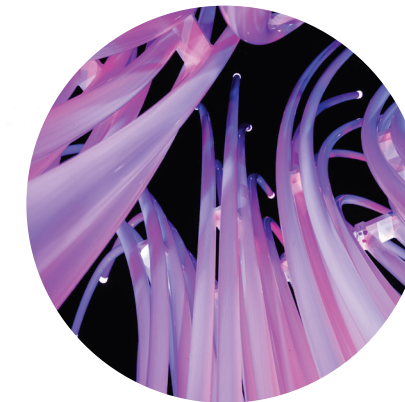
## CORTEN STEEL

Weathering steel develops a stable, rust-like protective layer (patina) when exposed to weather, eliminating the need for painting and protecting the underlying metal from further corrosion.

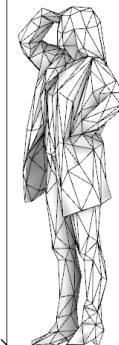


## POWDER COATING

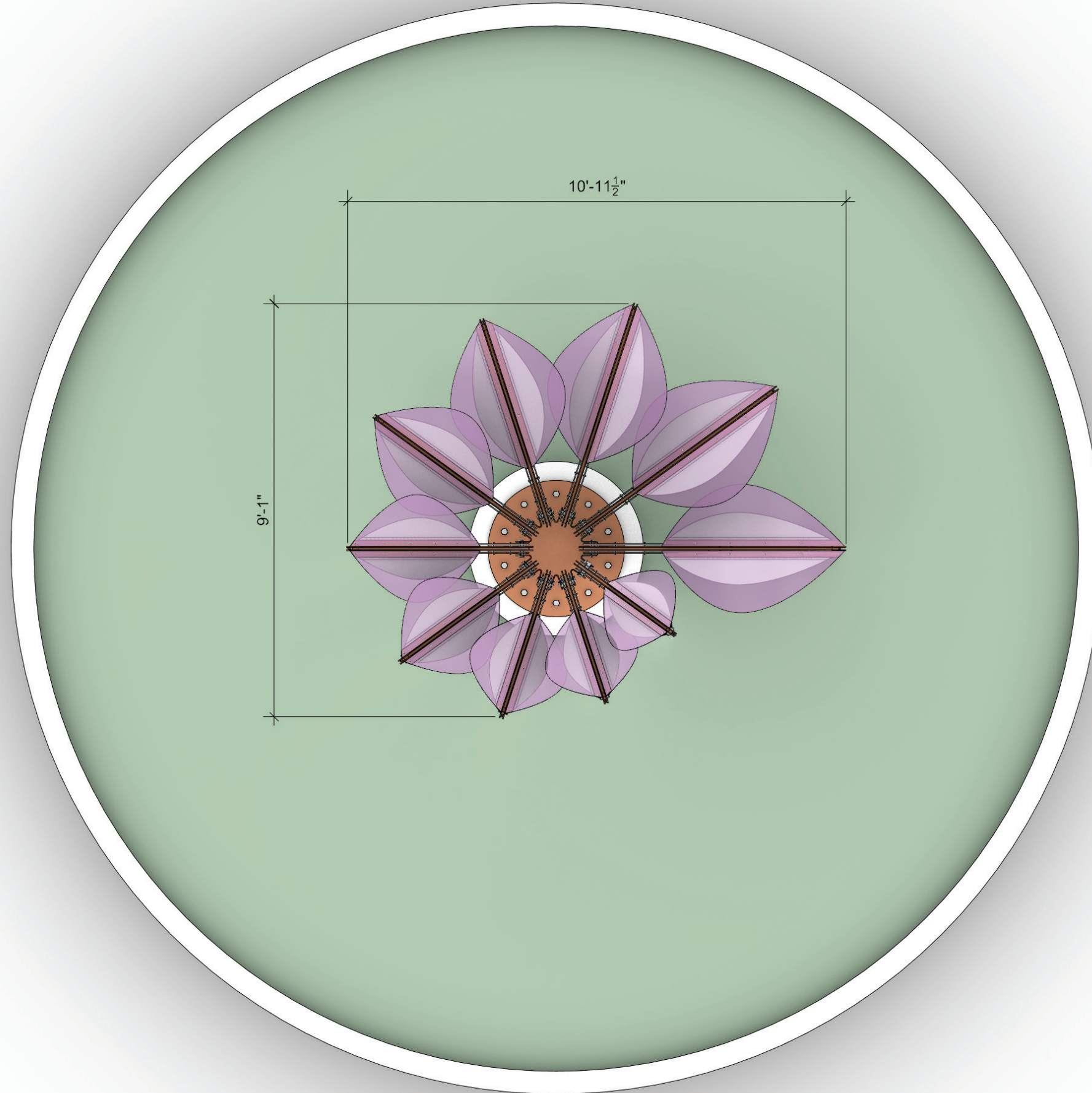
Powder coating is extremely durable, long-lasting surface resistant to chipping, scratching, fading, and corrosion. When architectural specs are used colorfastness can last 10-15 years



# ELEVATION



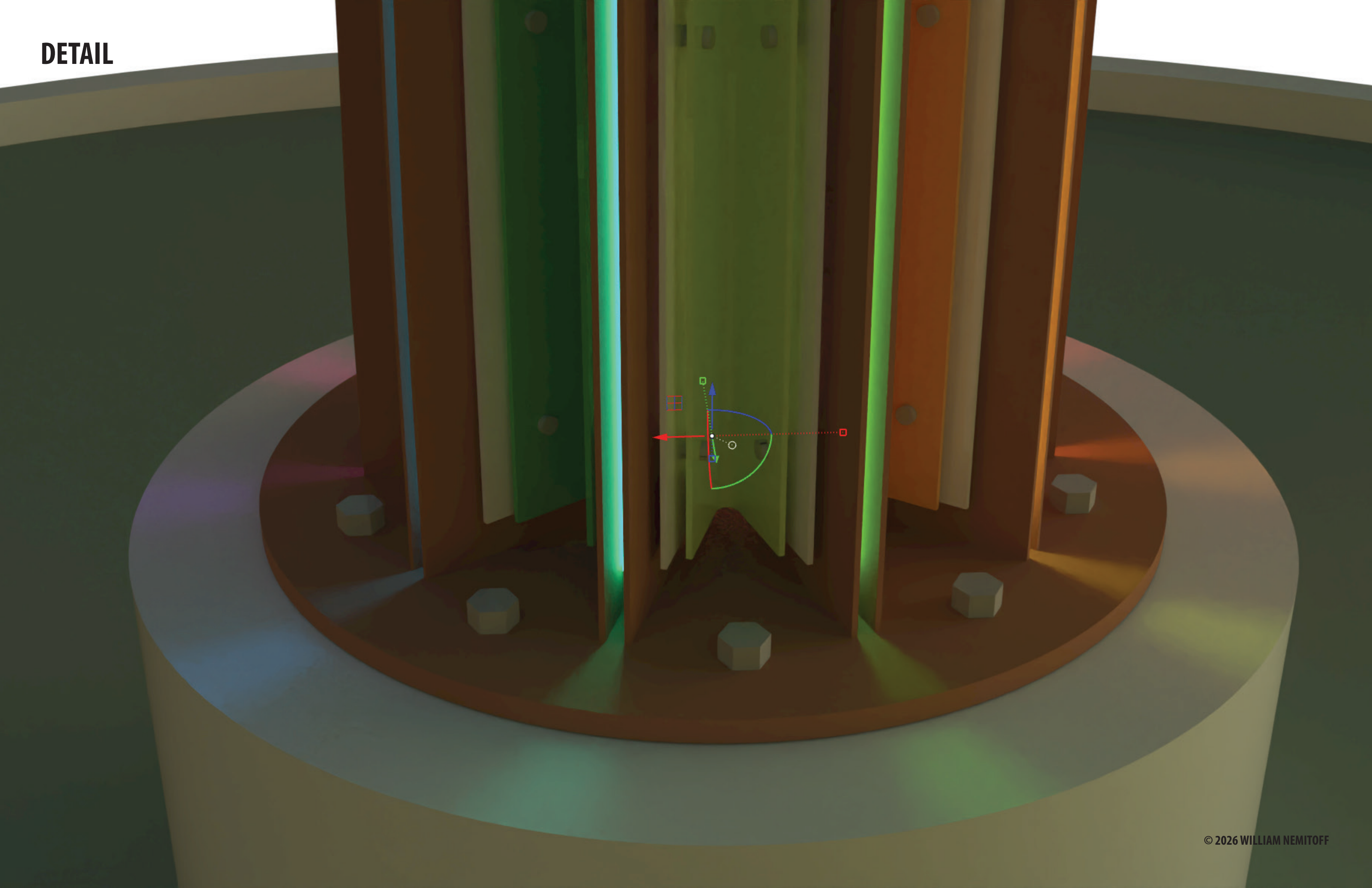
# PLAN



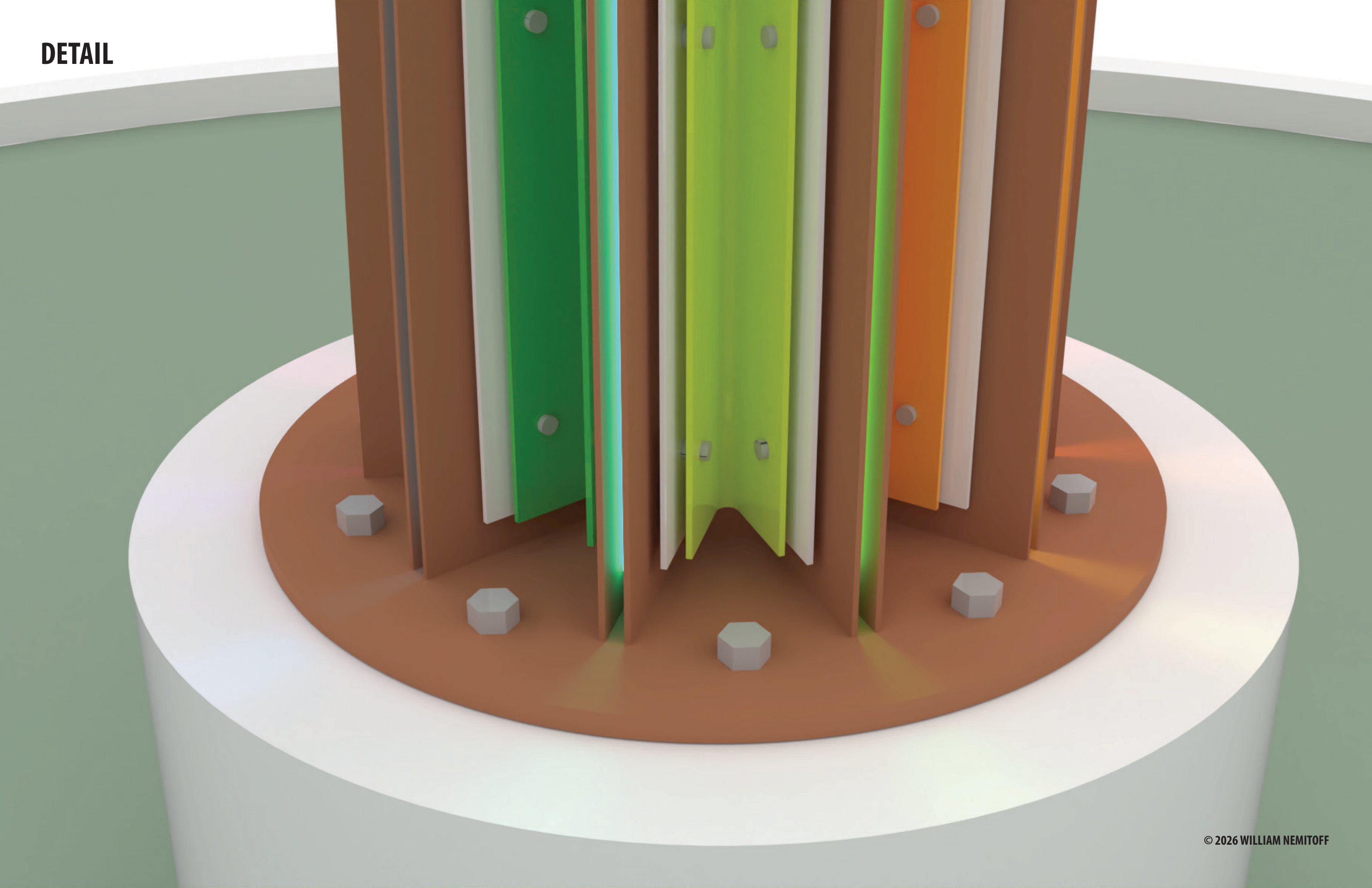
SECTION



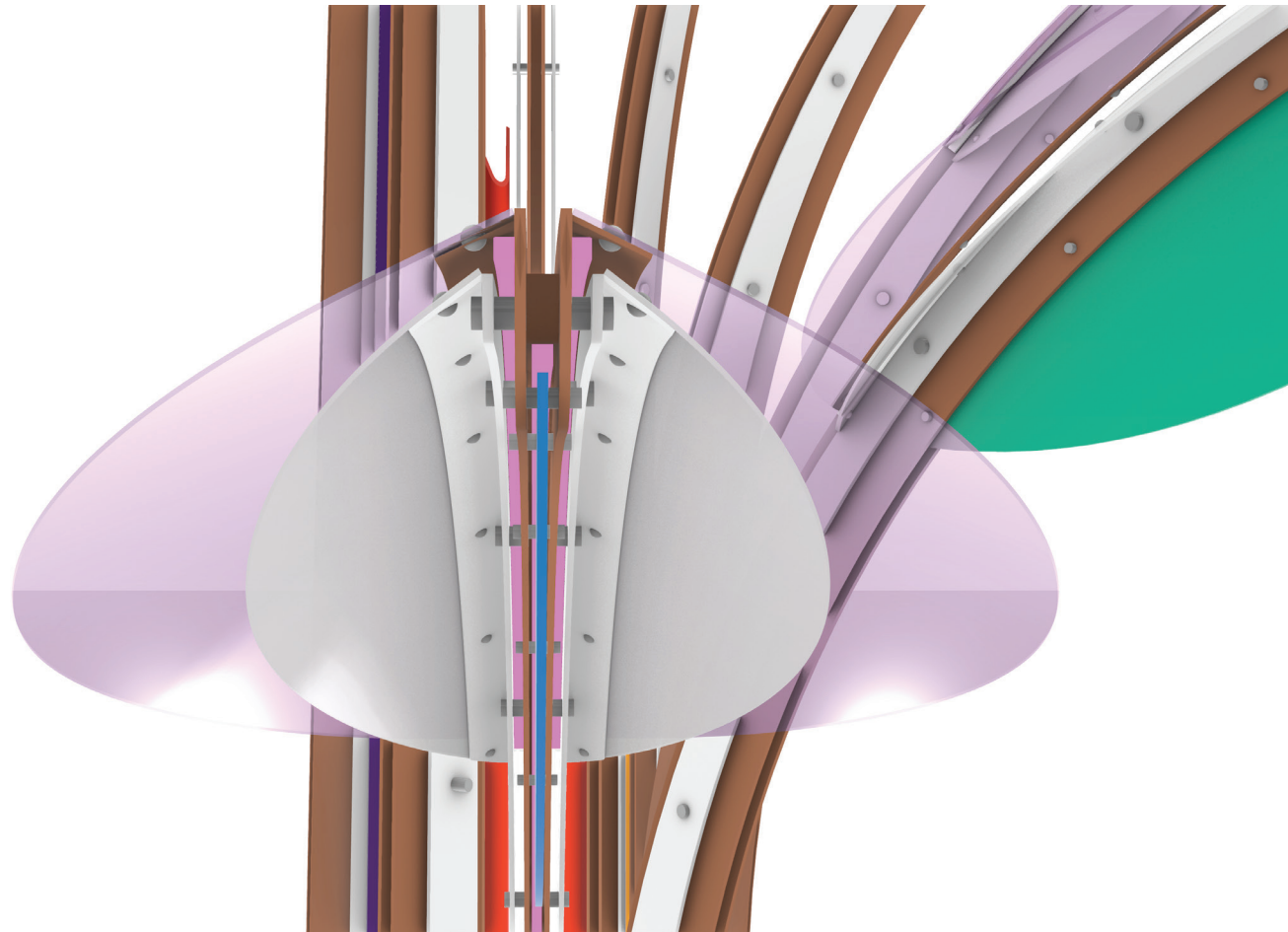
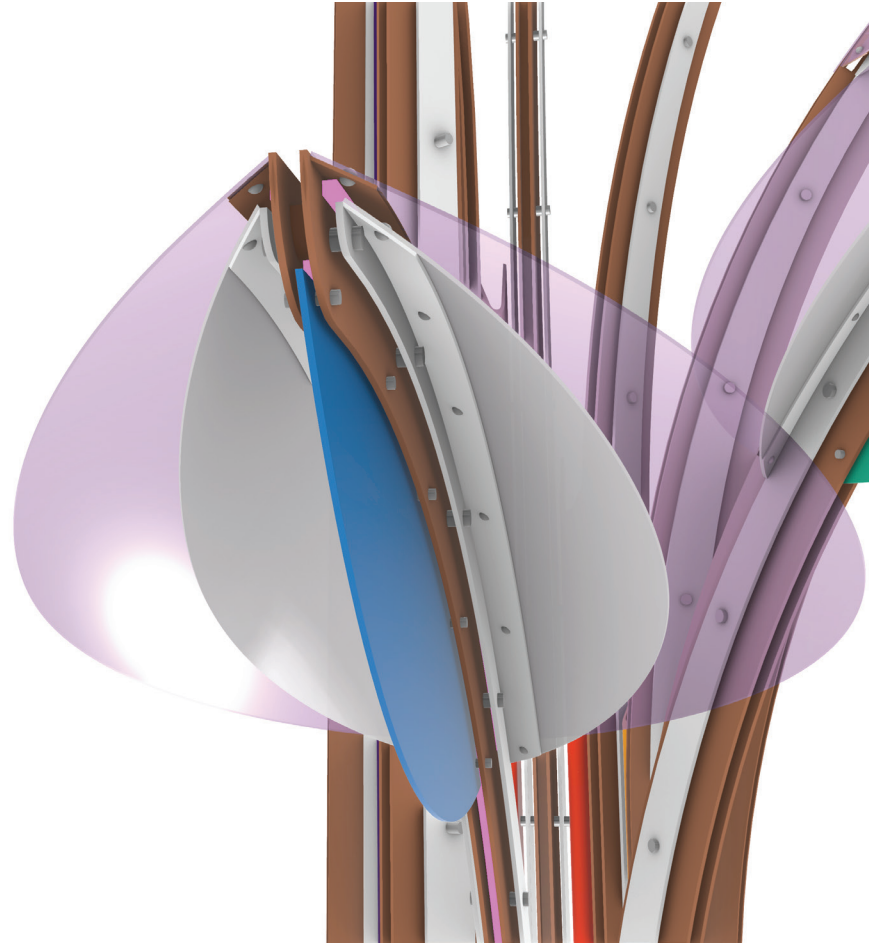
# DETAIL



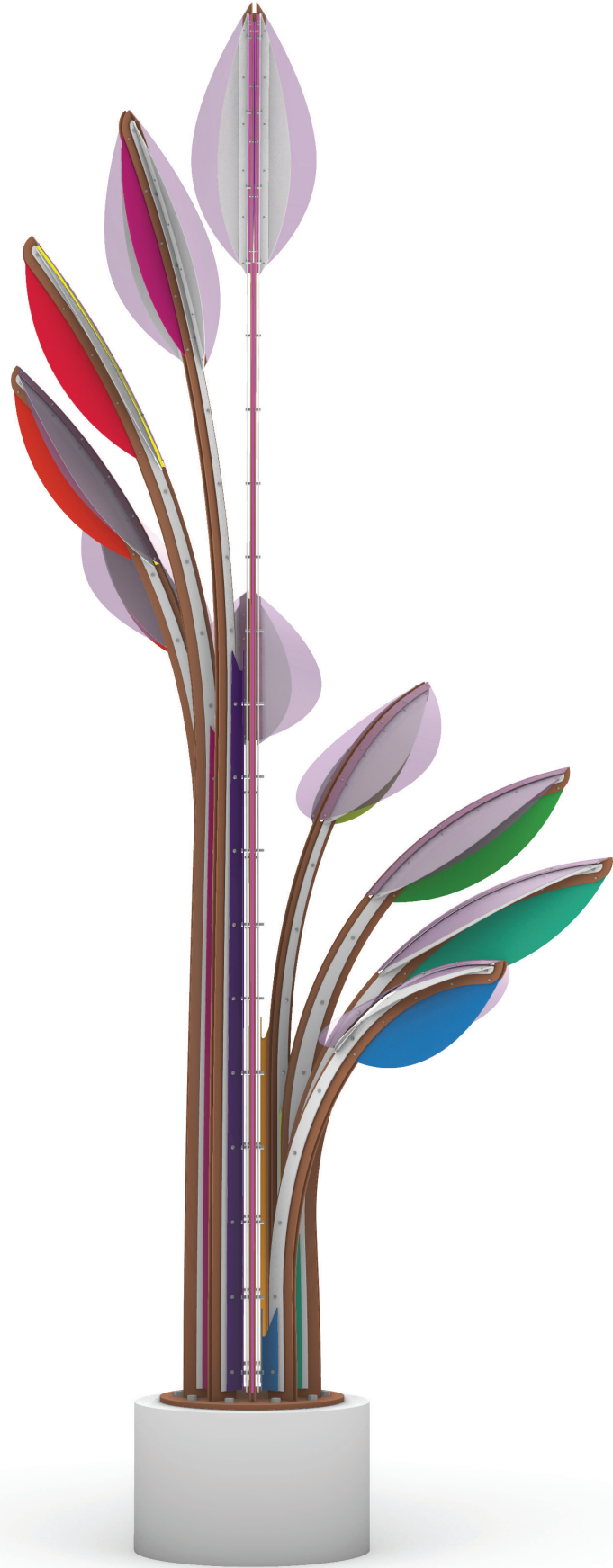
**DETAIL**



**DETAIL**



# RENDERING



# BUDGET | Preliminary

The preliminary project budget allocates the available funds to fully develop and implement the artwork shown in the accompanying drawings. An 8% contingency is included to cover further refinements and prototypes of the artwork that are likely to occur in the design development stage.

| PRELIMINARY BUDGET                      |  |  |               |
|---|--|--|---------------|
| <b>Materials</b>                        |  |  | <b>33000</b>  |
|   | Stainless Steel                        |  |               |
|   | Corten Steel                           |  |               |
|   | Polycarbonate                          |  |               |
|   | Electrical + Lighting Hardware         |  |               |
|   | Consumables                            |  |               |
|   | Structural Hardware                    |  |               |
|   |  |  |               |
| <b>Off-site Fabrication + Equipment</b> |  |  | <b>55000</b>  |
|   | Structural Fabrication and Assembly    |  |               |
|   | Powder Coating                         |  |               |
|   | Lighting Fabrication                   |  |               |
|   |  |  |               |
| <b>On-site Processes + Installation</b> |  |  | <b>15000</b>  |
|   | Foundation                             |  |               |
|   | Installation Onsite                    |  |               |
|   | Heavy Equipment                        |  |               |
|   | Onsite Labor                           |  |               |
|   |  |  |               |
| <b>Management + Engineering</b>         |  |  | <b>17000</b>  |
|   | Artist Fee (Design + Develop + Manage) |  |               |
|   | Engineering                            |  |               |
|   |  |  |               |
| <b>Travel + Transportation</b>          |  |  | <b>6000</b>   |
|   | Artist Travel                          |  |               |
|   | Transportation                         |  |               |
|   |  |  |               |
| <b>Miscellaneous Costs</b>              |  |  | <b>14000</b>  |
|   | Photo and Video Documentation          |  |               |
|   | Credit Plaque                          |  |               |
|   | Contingency (8%)                       |  |               |
|   |  |  |               |
| <b>Project Total:</b>                   |  |  | <b>140000</b> |

# TIMELINE | Preliminary

|  |          |
|--|----------|
| Final Design Development + Engineering | 2 months |
| Prototyping + Permits                  | 1 month  |
| Fabrication                            | 6 months |
| Foundation                             | 1 month  |
| Transportation + Installation          | 1 month  |
| Final Approval + Documentation         | 1 month  |

Many of these processes will occur concurrently. Final completion is expected by within one year.

# MAINTENANCE

Visually inspect yearly.  
Clean with mild detergent as needed.







**CURIOUS FORM**  
Art | Fabrication | Design

## **CONTACT**

William Nemitoff  
913.961.0987  
[will@curiousform.com](mailto:will@curiousform.com)

5733 Saint Anthony Ave  
New Orleans, LA 70122