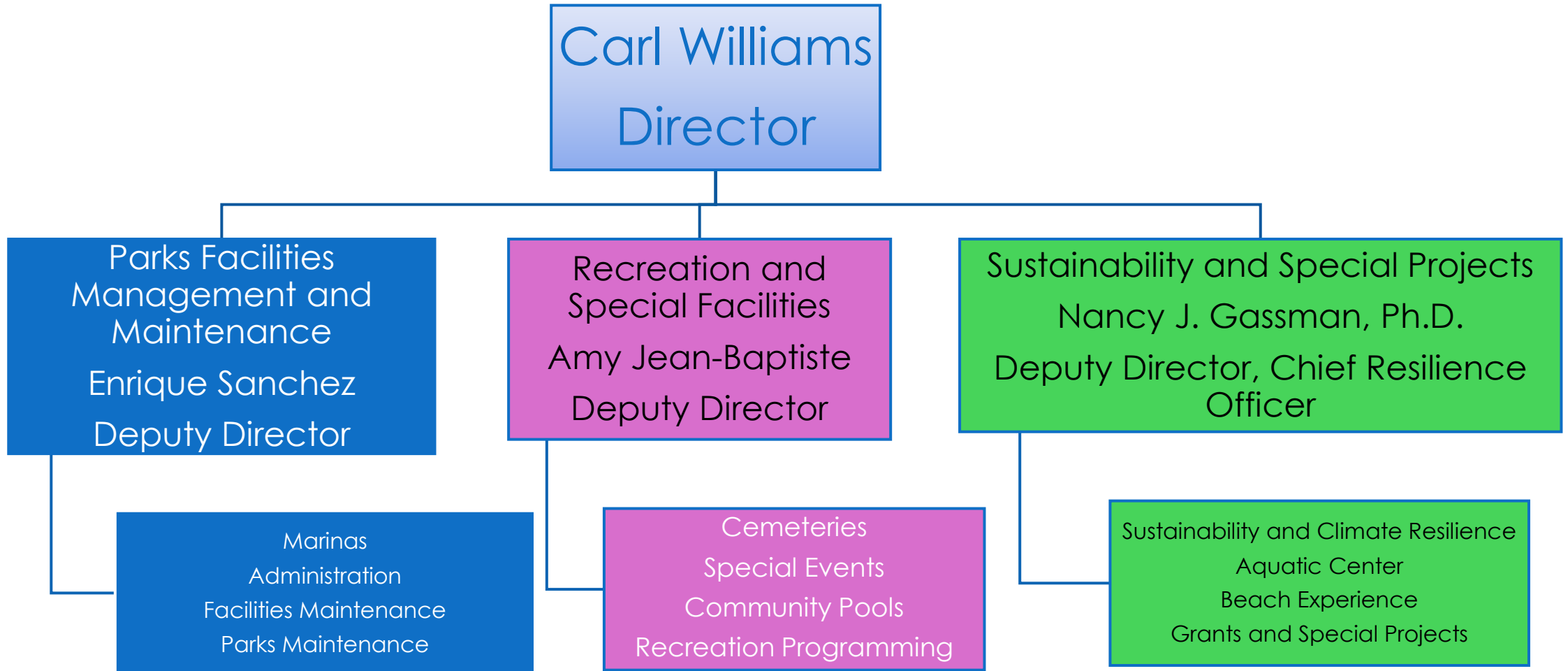




CITY OF  
FORT LAUDERDALE

# An Introduction to the Sustainability and Special Projects Division

Parks, Recreation and Beaches Board  
6:00 PM December 3, 2025



Bio

- Ph.D. from University of Miami
- 30 years in public service
  
- 18 years with Broward County
  - Water Resources Manager
  - Director of Environmental Monitoring
  - Natural Resources Administrator (Energy and Sustainability Program)
  
- 12 years with City of Fort Lauderdale
  - Sustainability Manager
  - Asst. Public Works (PW) Director, Dep. PW Dir., Chief Resilience Officer
    - Solid Waste and Recycling, Fleet Services, Environmental and Regulatory Affairs, Stormwater Operations, Sustainability and Climate Resilience
  - Deputy Director – Parks and Recreation

*\* Worked in a Recreation Center for 3 years in high school and college*





# Sustainability and Special Projects

# SUSTAINABILITY AND SPECIAL PROJECTS

Sustainability and Special Projects  
Nancy J. Gassman, Ph.D.  
Deputy Director  
Chief Resilience Officer

Sustainability and  
Climate Resilience  
(includes Urban  
Forestry)  
8 FTEs

Aquatic Center  
Up to 50 FT and PT  
staff

Beach Experience  
1 FTE

Grants and Special  
Projects  
2 FTEs



# 2029 Strategic Plan

## GOAL 3: Be a Sustainable and Resilient Community



**PRESS PLAY**  
**FORT LAUDERDALE**  
*Our City, Our Strategic Plan 2029*



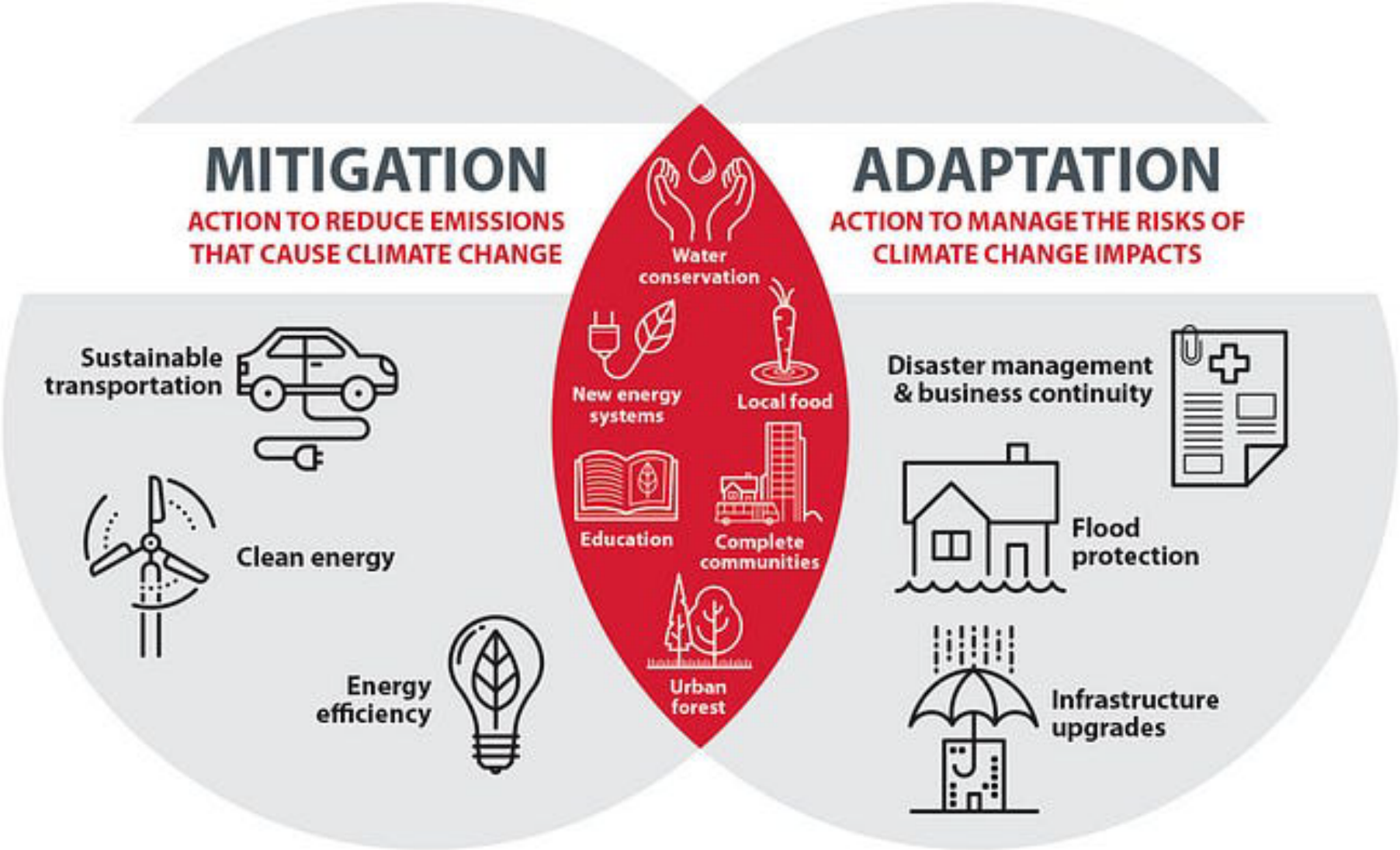
Infrastructure and Resilience



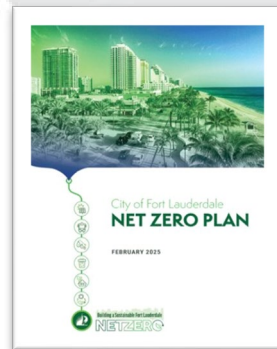
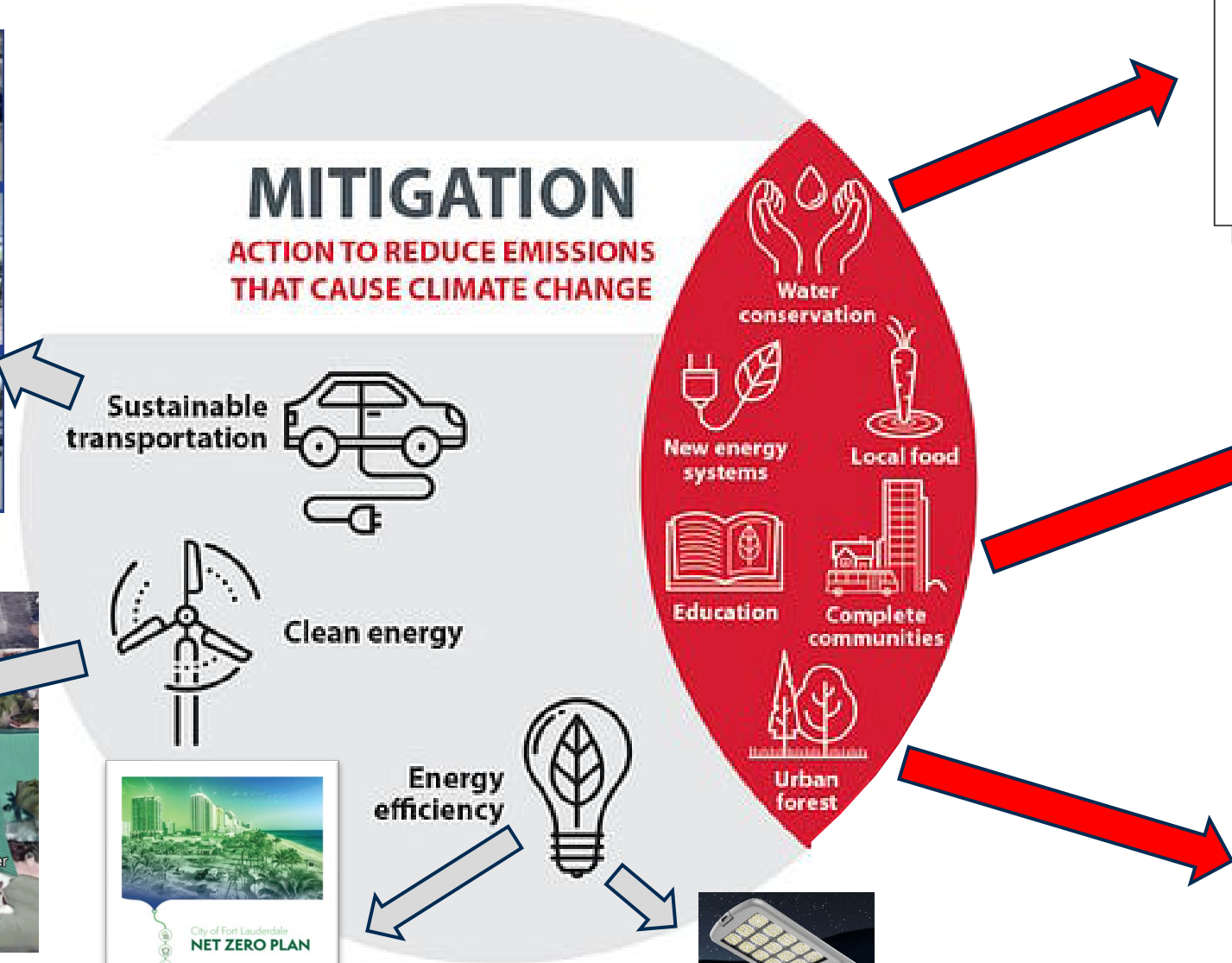
**GOAL 3**  
Be a sustainable and resilient community.



# Building Climate Resilience



# SUSTAINABILITY - CLIMATE MITIGATION



CITY OF FORT LAUDERDALE

We Are Green | We Are FTL

CM 25-020  
Page 1

# PLANNING FOR SUSTAINABILITY

## Greenhouse Gas Emissions Reduction



### City of Fort Lauderdale NET ZERO PLAN

FEBRUARY 2025



Building a Sustainable Fort Lauderdale  
**NETZERO**



# PLANNING FOR SUSTAINABILITY

## URBAN FOREST

### Reaching 33% Tree Canopy by 2040

How do we get there?

### 14 Action Areas, 62 Recommendations

- **Strengthen** tree preservation measures
- **Update** permit fees
- **Enhance** replacement stds
- **Incentivize** tree preservation
- **Assist** homeowners
- **Expand** staffing
- **Minimize** impacts from pests and invasives
- **Prioritize** tree planting
- **Restore** mangrove habitats
- **Standardize** design plans
- **Centralize** tree databases
- **Engage** with communities
- **Bridge** across agencies
- **Adopt** a new tree palette

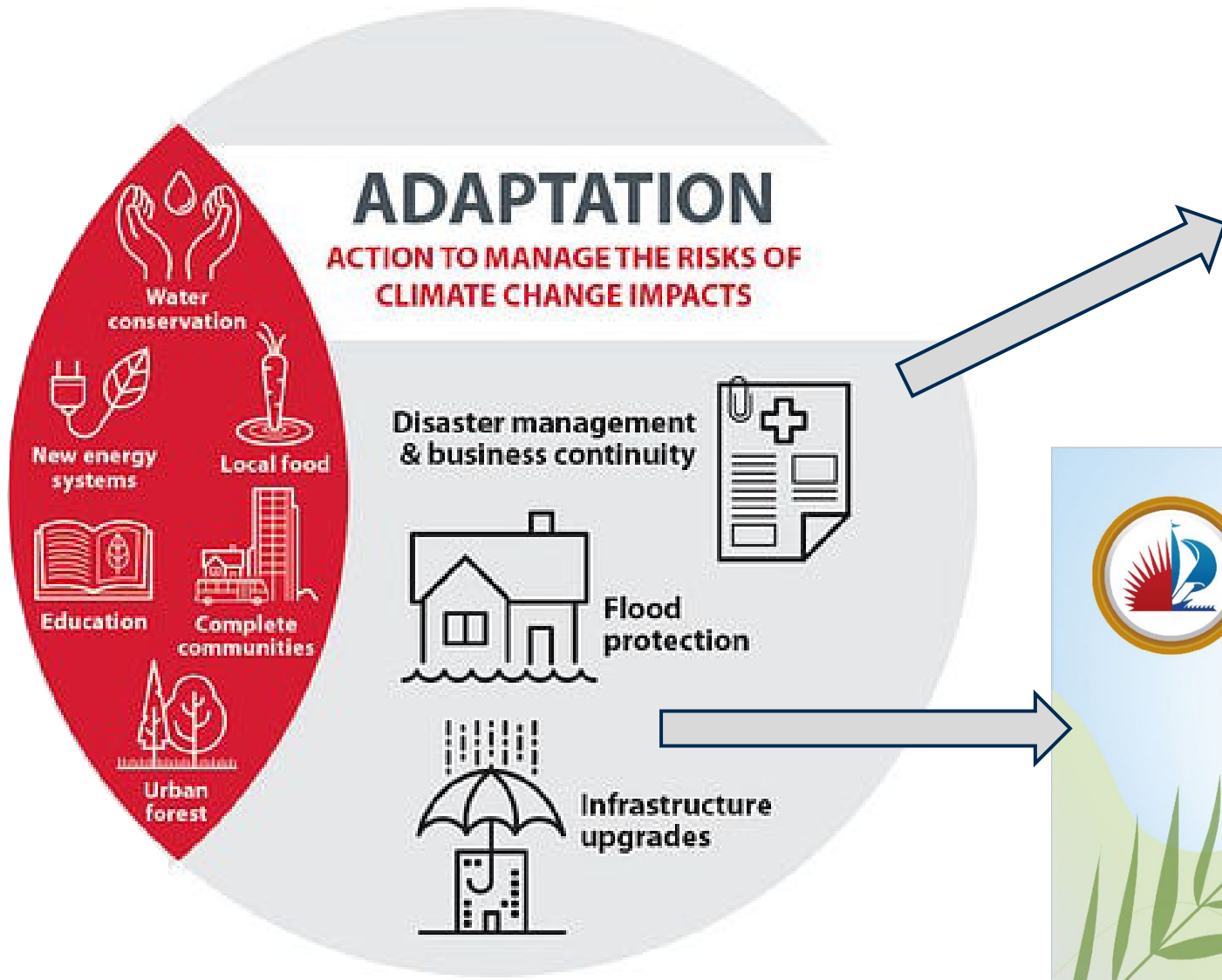


 WeAreGreen | WeAreFTL

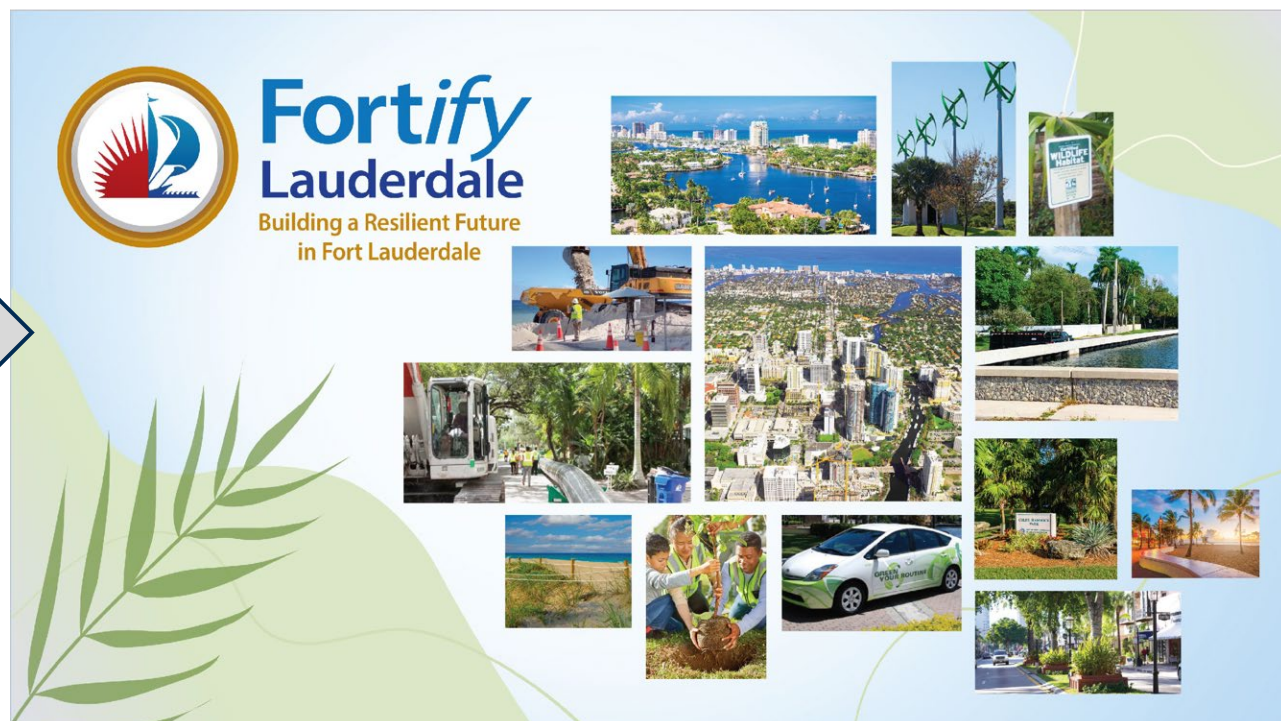


CITY OF FORT LAUDERDALE

# RESILIENCE - CLIMATE ADAPTATION

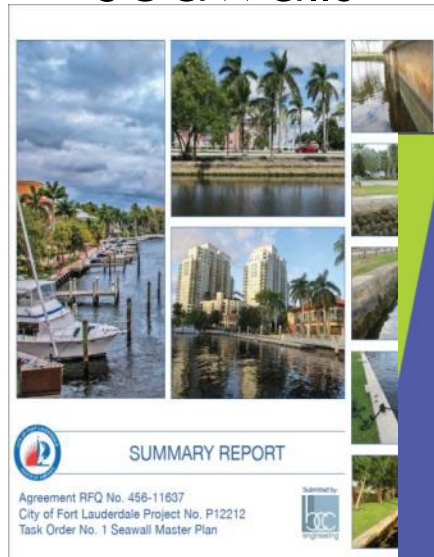


Continuity of Operations, Urban and Master Planning



# MASTER PLANNING FOR RESILIENCE

## Seawalls



## Stormwater



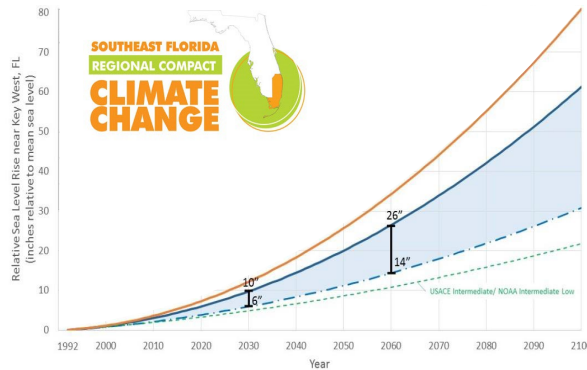
## Utilities



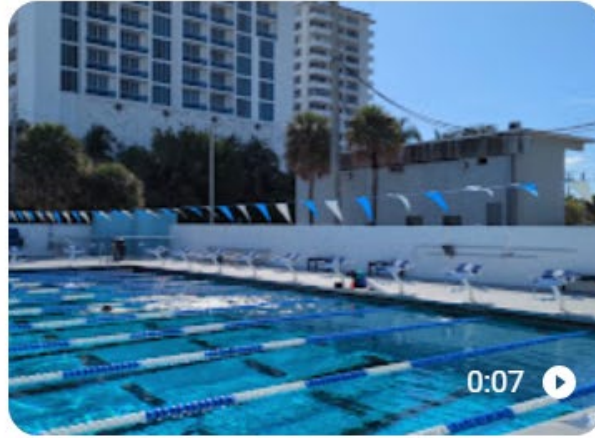
## Parks



## Investments in Resiliency Cemeteries



# FORT LAUDERDALE AQUATIC CENTER



## FY26 Goals

- Grow the City's teams and facility programming
- Coordinate effectively with International Swimming Hall of Fame (ISHOF) construction
- Attract world class swimming and diving competitions



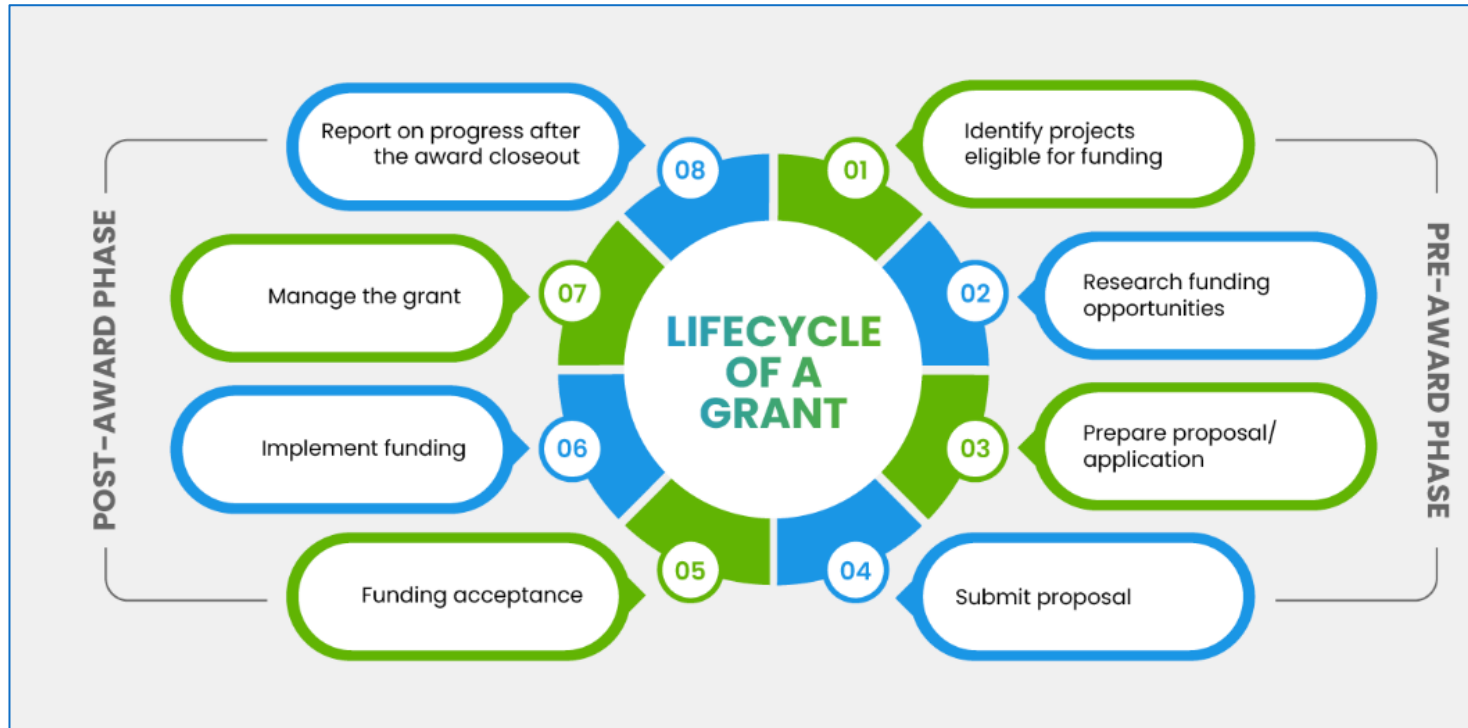
# BEACH EXPERIENCE

## FY26 Goals

- Maintain the beach appearance
- Develop an ADA Ramp inventory
- Update the wave wall signage
- Support Beach Business Improvement District



# GRANTS AND SPECIAL PROJECTS



## FY26 Goals

- Close out old grants
- Be more proactive in identifying potential grants
- Improve the process of grants management and tracking

- 3 applications in review by grantor
- 5 pending grant agreements (2 for ISHOF)
- 13 active grants (\$7.1 M)
- 8 unique grant sources

## Special Projects

- Plastics Use at City Events
- Land Use Designation for Parks

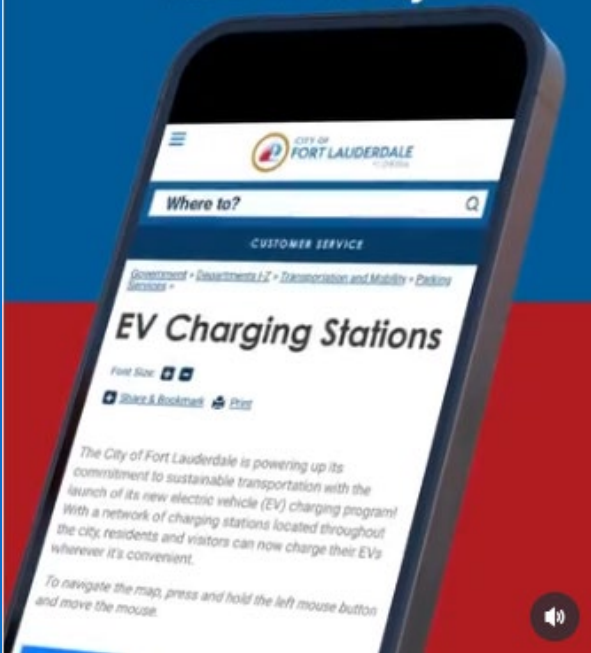


# QUESTIONS?

# PARKS & RECREATION

 City of Fort Lauderdale

Visit  
[fortlauderdale.gov](http://fortlauderdale.gov)  
to locate your  
nearest EV charging  
station today!



CITY OF FORT LAUDERDALE