

City of Fort Lauderdale
Special Event Application

Event Topic: Beach Party
Saturday, January 3, 2022

A fence line on the beach with two bars, a DJ with amplified music and speakers in the center of the fence line. Approximately 10' x 10' pop-up copopies arranged on the perimeter sections.

This is very similar to the same event we have processed in the same location now three times prior. The exceptions are as follows:

1. We are using more Copopies due to their popularity in this case the fence line to be slightly longer.
2. Having done this event three times prior, we find that moving equipment on and off the beach is exponentially more difficult. So we are using fewer tools to execute the work load on the beach if they are accepted by the City.
3. At least one but not more than two Club Car UTV vehicles to move equipment on and off the beach. These will be rented from, delivered and picked up by Dante Equipment in Hollywood, FL. We expect that they will need to be delivered toward the end of the day Friday night generally be picked up Monday AM. We will need some indication of fees when we pick them up, whether in the pickup on the street, but we expect the fee to be fees.
4. A 20kw Generator, Silent, Diesel generator will be delivered to the next to last parking space. It will be used to power two ice chests and a radio system as well as a few misc. items including set up and possibly some limited lighting. The generator will also be supplied by Dante Equipment.
5. Two 1,000 pound Ice Chest Freezers, placed adjacent to the generator provided by Fort Lauderdale Ice. The ice chests, provided by Fort Lauderdale Ice, are likely to be delivered Friday night picked up Monday. Alternately we can possibly load them onto a box truck and leave them in the truck but it will cost us to rent two trucks instead of one.
In the past we have provided both for the parking spaces in that line. This year the last minute we can handle a couple of them. We will start the event this year and plan to rent 19 spaces.
7. Lastly, since on the day of this event there will be a full moon, we would like to extend visiting guests to Fort Lauderdale Moon Rise on the beach. If approved we will extend the closing of the event to 8 PM. As the sun sets and the moon rises we would have the DJ blend the music to more chill, easy-on-the-eye vibe, hopefully sending our guests home somewhat relaxed and energized by the experience. Depending on soiling we may have hammocks on stands to the side. We expect to pay additional fees associated with having life guard work on the beach so we can post our own security to work on

guests from getting the water after Dusk or whatever times prescribed by the city. We are flexible to satisfy work with the city.

8. We do not have a lighting tent as a very difficult task for the DJ and staff to be able to perform their duties and perform services. We will have LED lighting strips that are extra for the beach. The event we determine that the lighting would be appropriate, we would consult with the Turtle experts to make sure we cause no disruption. For cleanup we will have the lighting to make sure we leave the beach as it was found and we will need to know what lighting is required/required to ensure acceptable for that purpose.

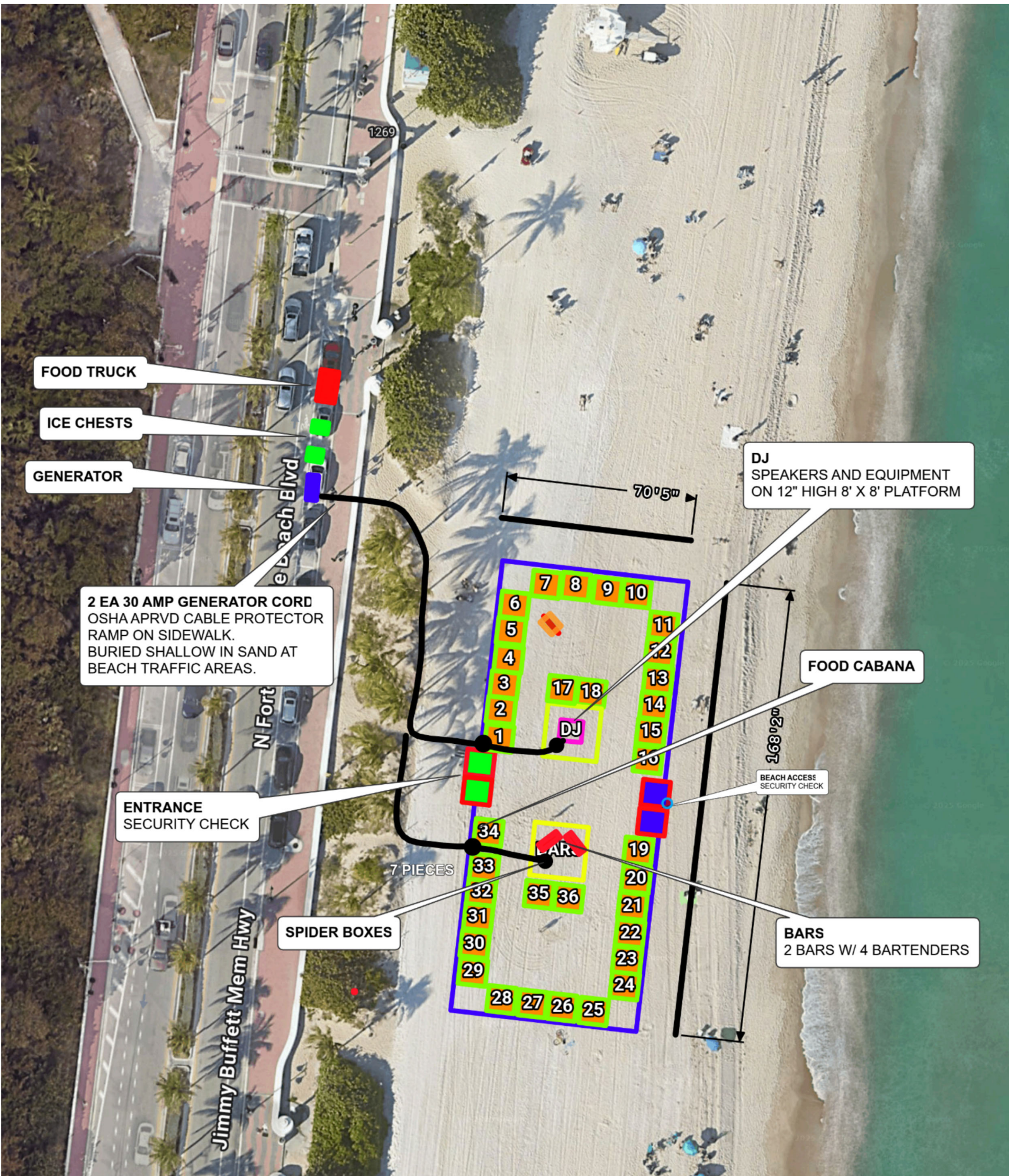
Other than these table cases, everything will remain as we had truck parked along the street, and barbeque catered for our VIP Guests.

As we have done in the past, we will have a dedicated crew at the beach for the duration. We are sure all the trash collected and taken with us. We expect to be off the beach entirely within 2 hours from the end of the event.

For the past two events we have used SNL Events and believe we have listed the appropriate application. We have listed a contract for the event as we have to do a decision at this time. We are currently working with a temporary agency to help projects with a general average established working relationship place with direct supervision from our staff. We are always staying within the capacity.

We have completed the application for a permit 8 pages. If that is not acceptable, we can certainly discuss adjustments.

NOTE: We are applying for the Brc State Park location where we have always done our beach events. If there is a problem with the calendar at the Summer event for the beach, we would consider moving to January event that is at the location. I



FOOD TRUCK

ICE CHESTS

GENERATOR

2 EA 30 AMP GENERATOR CORD
OSHA APRVD CABLE PROTECTOR
RAMP ON SIDEWALK.
BURIED SHALLOW IN SAND AT
BEACH TRAFFIC AREAS.

ENTRANCE
SECURITY CHECK

SPIDER BOXES

7 PIECES

70'5"

DJ
SPEAKERS AND EQUIPMENT
ON 12" HIGH 8' X 8' PLATFORM

FOOD CABANA

BEACH ACCESS
SECURITY CHECK

168'2"

BARS
2 BARS W/ 4 BARTENDERS

Jimmy Buffett Mem Hwy

N Fort

Beach Blvd

1269