



Memorandum

Memorandum No: 25-011

Date: February 18, 2025

To: Honorable Mayor, Vice Mayor, and Commissioners

From: Susan Grant, Acting City Manager *Susan Grant*

Re: Upcoming Closure of Runway 9-27 at Fort Lauderdale Executive Airport

The purpose of this memo is to inform the City Commission of an upcoming runway closure at Fort Lauderdale Executive Airport.

The primary runway at Fort Lauderdale Executive Airport (FXE), Runway 9-27, will be closed for 10 days for a Pavement Rehabilitation project. The work is scheduled to begin on Monday, February 24, 2025, at 10:00 p.m.

The Runway 9-27 Pavement Rehabilitation project is a required initiative outlined in the Airport's approved Airport Layout Plan to address the deteriorating condition. The existing asphalt was last rehabilitated in 2004 (Exhibit 1).

During the closure of Runway 9-27, Runway 13-31 will remain operational for aircraft arrivals and departures. Residents located in the southeast and northwest areas of the Airport may experience an increase in aircraft activity over their neighborhoods (Exhibit 2).

Beginning Friday, February 28, 2025 from 10 p.m. to Monday, March 3, 2025 at 6 a.m. both Runways will be closed with only helicopter operations permitted. The Air Traffic Control Tower, which operates 24 hours daily, will continue to manage aircraft traffic flow over surrounding communities throughout the construction period.

Following the initial 10-day closure, the majority of the remaining work will be conducted during nighttime hours. The project is expected to be completed by May 30, 2025. All scheduled work is weather-dependent and may affect planned opening and closing times. Updates will be provided on any unforeseen adjustments to the schedule.

For more information, please contact Rufus James, Executive Airport Director at 954-828-4968 or rjames@fortlauderdale.gov

Exhibit 1

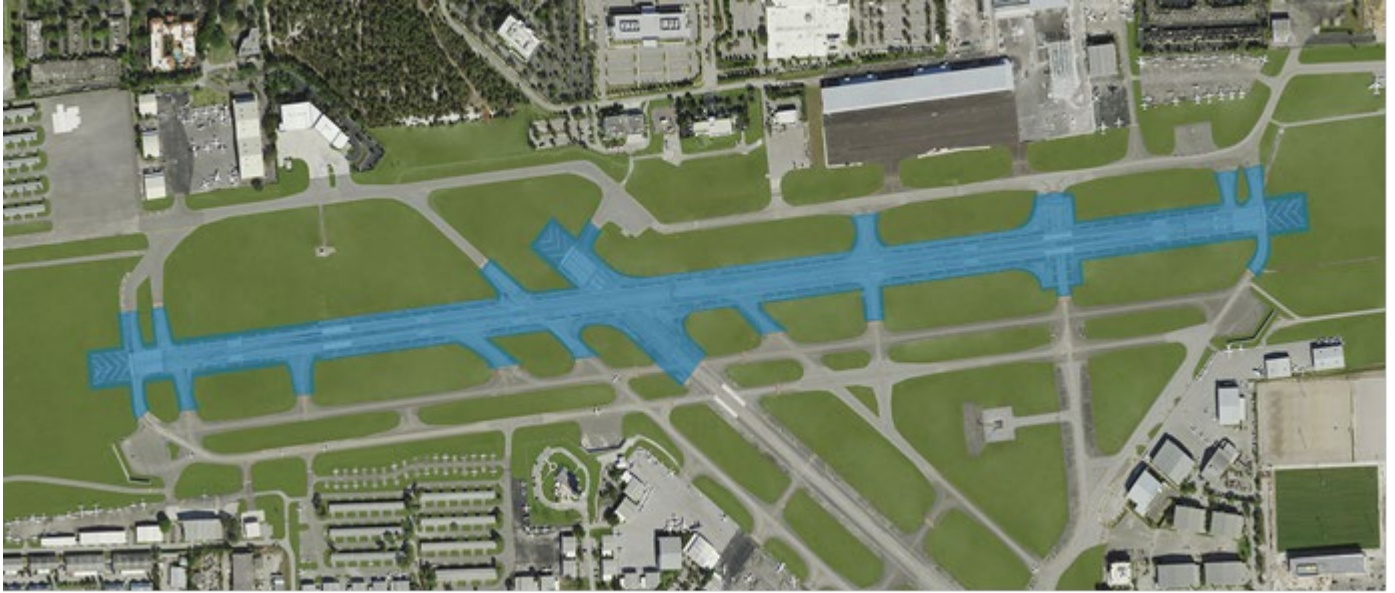
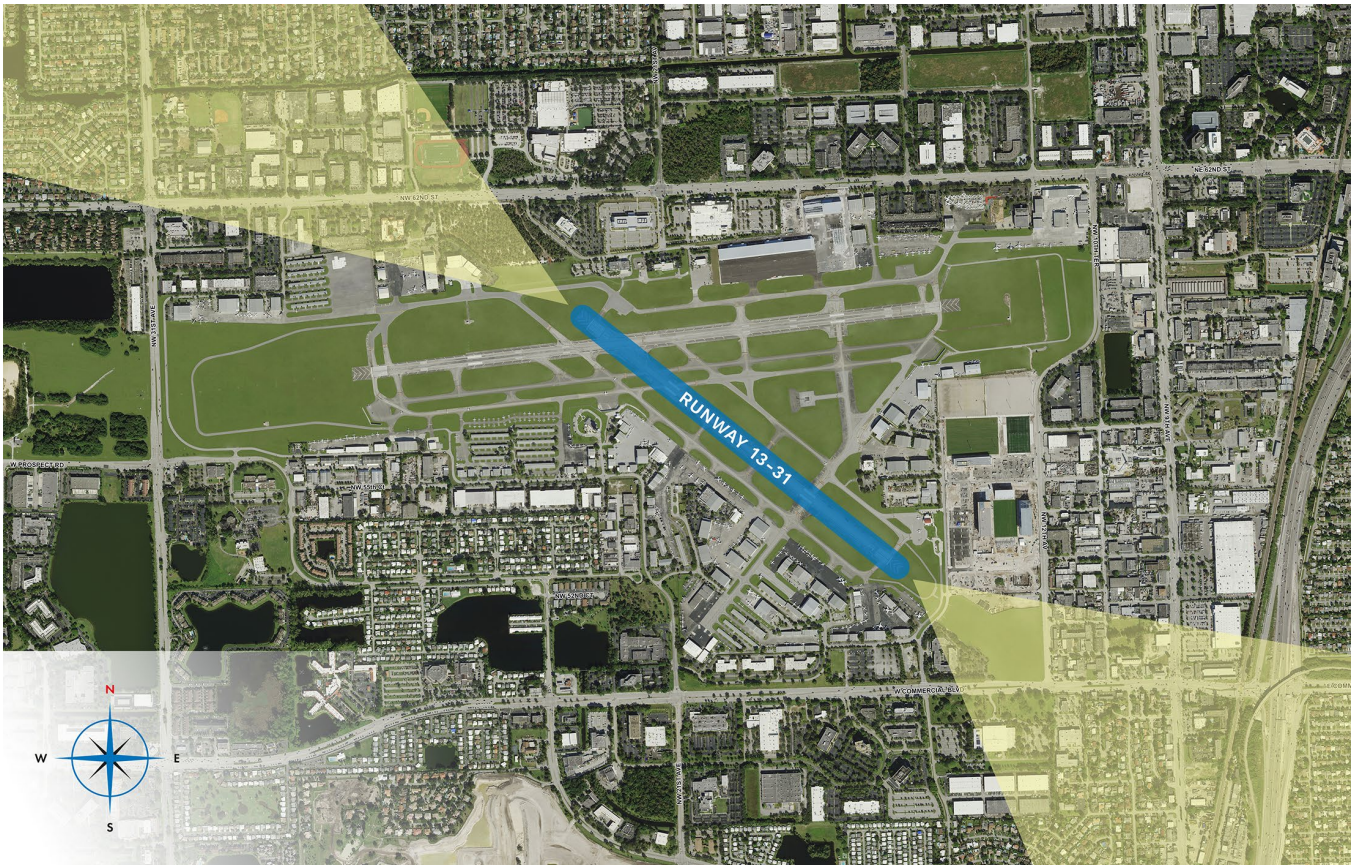


Exhibit 2



Attachment: Runway 9-27 Notice to FXE Tenants

c: Anthony G. Fajardo, Assistant City Manager
Laura Reece, Acting Assistant City Manager
Ben Rogers, Acting Assistant City Manager
Christopher Cooper, Acting Assistant City Manager
D'Wayne M. Spence, Acting City Attorney
David R. Soloman, City Clerk
Patrick Reilly, City Auditor
Department Directors
CMO Managers

FORT LAUDERDALE EXECUTIVE AIRPORT **NOTICE TO TENANTS**

RUNWAY 9-27 CLOSURE **Pavement Rehabilitation**

In support of the upcoming Runway 9-27 Pavement Rehabilitation project, Runway 9-27 will close for 10 days. On Monday, February 24, 2025, at 10:00 p.m. Runway 9-27 will undergo full closure for 10 days, as highlighted in the project schedule. The project is essential to ensure the Airport's continued safety and efficiency. We encourage you to review the scope and schedule provided below for comprehensive details regarding planned closures and operational impacts.

The Runway 9-27 Pavement Rehabilitation project is a required initiative outlined in the Airport's approved Airport Layout Plan (ALP) to address the deteriorating condition of Runway 9-27. The existing asphalt on Runway 9-27 was last rehabilitated in 2004. This project will rehabilitate approximately 650,000 square feet of pavement, encompassing the runway and connector taxiways up to the hold position markings. The construction scope includes milling, paving, installing electrical systems, applying pavement markings, performing geotechnical work, and conducting construction surveys.

BG 1/8/2025

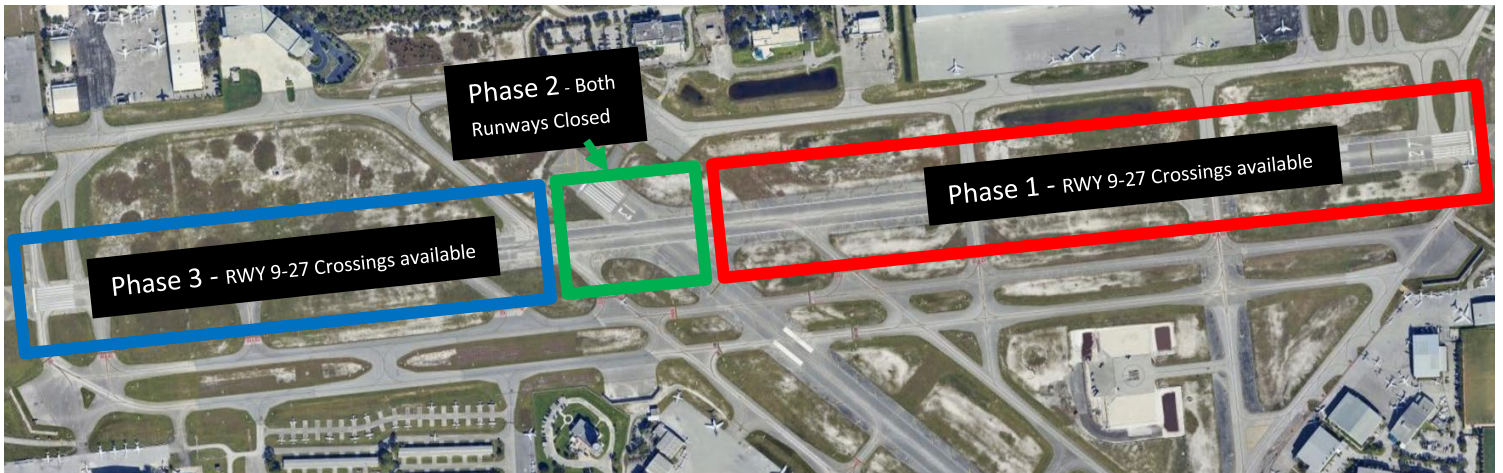
Please contact Airport Operations at [954-828-4392](tel:954-828-4392) if you have any questions.

FORT LAUDERDALE EXECUTIVE AIRPORT

6000 N.W. 21ST AVENUE, SUITE 200 | FORT LAUDERDALE, FLORIDA 33309 | TELEPHONE (954) 828-4955 | FAX (954) 938-4974

FXE FORT LAUDERDALE EXECUTIVE AIRPORT NOTICE TO TENANTS

Date & Scope	Closure	Operational Impact
Phase I – Four days Monday, February 24, from 10 p.m. to Friday, February 28, at 10 p.m. Scope: Milling and paving eastern half of Runway 9-27	Runway 9-27 Full Closure	Runway 9-27 closed 24 hrs./day. Runway 13-31 will remain operational. Two taxiways will remain accessible for crossing Runway 9-27.
Phase 2 – Two days Friday, February 28, from 10 p.m. to Monday, March 3, at 6 a.m. Scope: Milling and paving Runways 9-27 and 13-31 intersection	Airport Closure	Runways 9-27 and 13-31 closed 24 hrs./day. No fixed-wing arrivals or departures permitted.
Phase 3 – Four days Monday, March 3, from 6 a.m. to Friday, March 7, at 6 a.m. Scope: Milling and paving western half of Runway 9-27	Runway 9-27 Full Closure	Runway 9-27 closed 24 hrs./day. Runway 13-31 will remain operational. Two taxiways will remain accessible for crossing Runway 9-27



BG 1/8/2025

Please contact Airport Operations at [954-828-4392](tel:954-828-4392) if you have any questions.

FORT LAUDERDALE EXECUTIVE AIRPORT

6000 N.W. 21ST AVENUE, SUITE 200 | FORT LAUDERDALE, FLORIDA 33309 | TELEPHONE (954) 828-4955 | FAX (954) 938-4974