

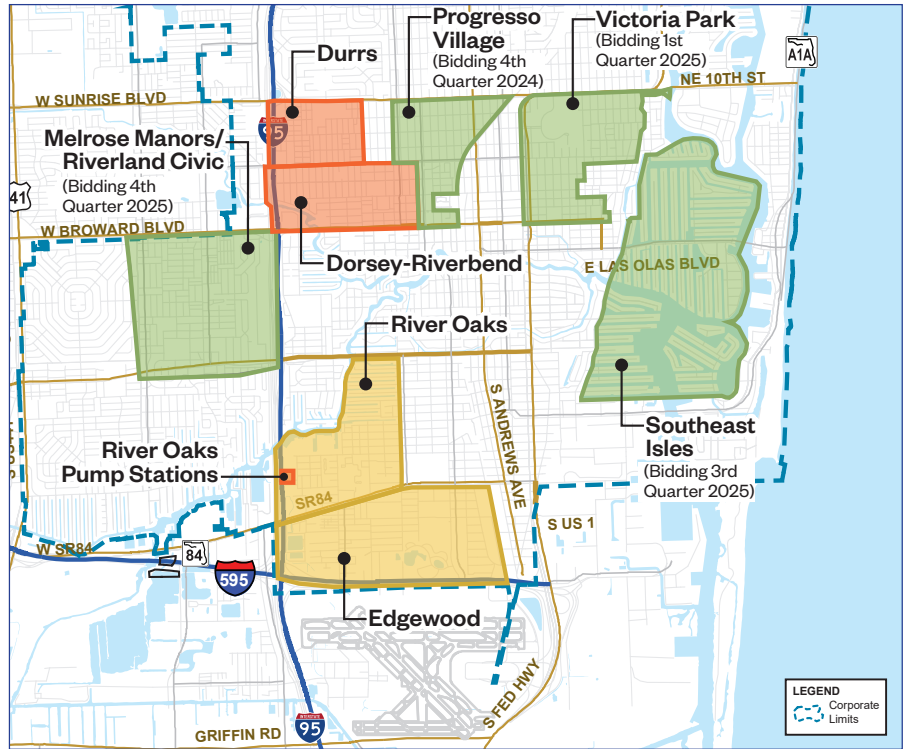
## Work on the Stormwater/Resilience Master Plan continues to progress throughout vulnerable neighborhoods in the City.

Updated project progress for Tranche 1 and Tranche 2 neighborhood is provided below. Work continues on planning efforts associated with the Tranche 2 neighborhoods, including updates to the City's existing stormwater model allowing simulation of current and future conditions to inform stormwater improvements.

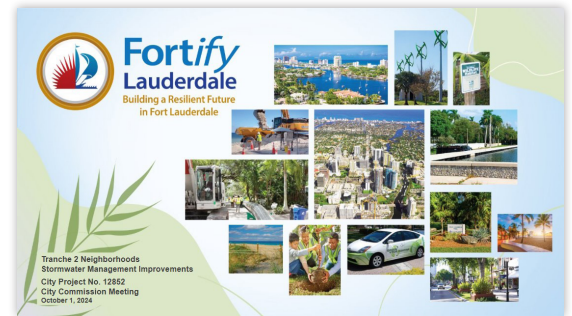
### Tranche 1 Neighborhoods

Project Status Update:

- Construction substantially completed
- In Design



Community members actively participating in a previous public outreach meeting.



A progress update on the Fortify Lauderdale program was given at the October 1st, 2024 City Conference Meeting.

### Public Outreach Meetings for Tranche 2 Neighborhoods.

The City is currently scheduling public outreach meetings, which will begin in October 2024 and continue through December 2024. Please check the Fortify Lauderdale website for the latest information on meetings in your neighborhood.

**Your input is essential**—stay informed and take part in shaping the future of your neighborhood at the upcoming meetings.