



# February 28<sup>th</sup>, 2022 Meeting

## Backup Materials

### Contents:

- Presentation: *Addressing the Impact of Invasive Subterranean Termites in Trees* {Thomas Chouvinc, Assistant Professor, Urban Entomology}

# Addressing the impact of invasive subterranean termites in trees



**Thomas Chouvenc**

Entomology and Nematology  
Ft. Lauderdale Research and Education Center



CITY OF FORT LAUDERDALE



**UF | IFAS**  
UNIVERSITY of FLORIDA

Nov 10-2021



# – Disclaimer –



This presentation is the property of the University of Florida

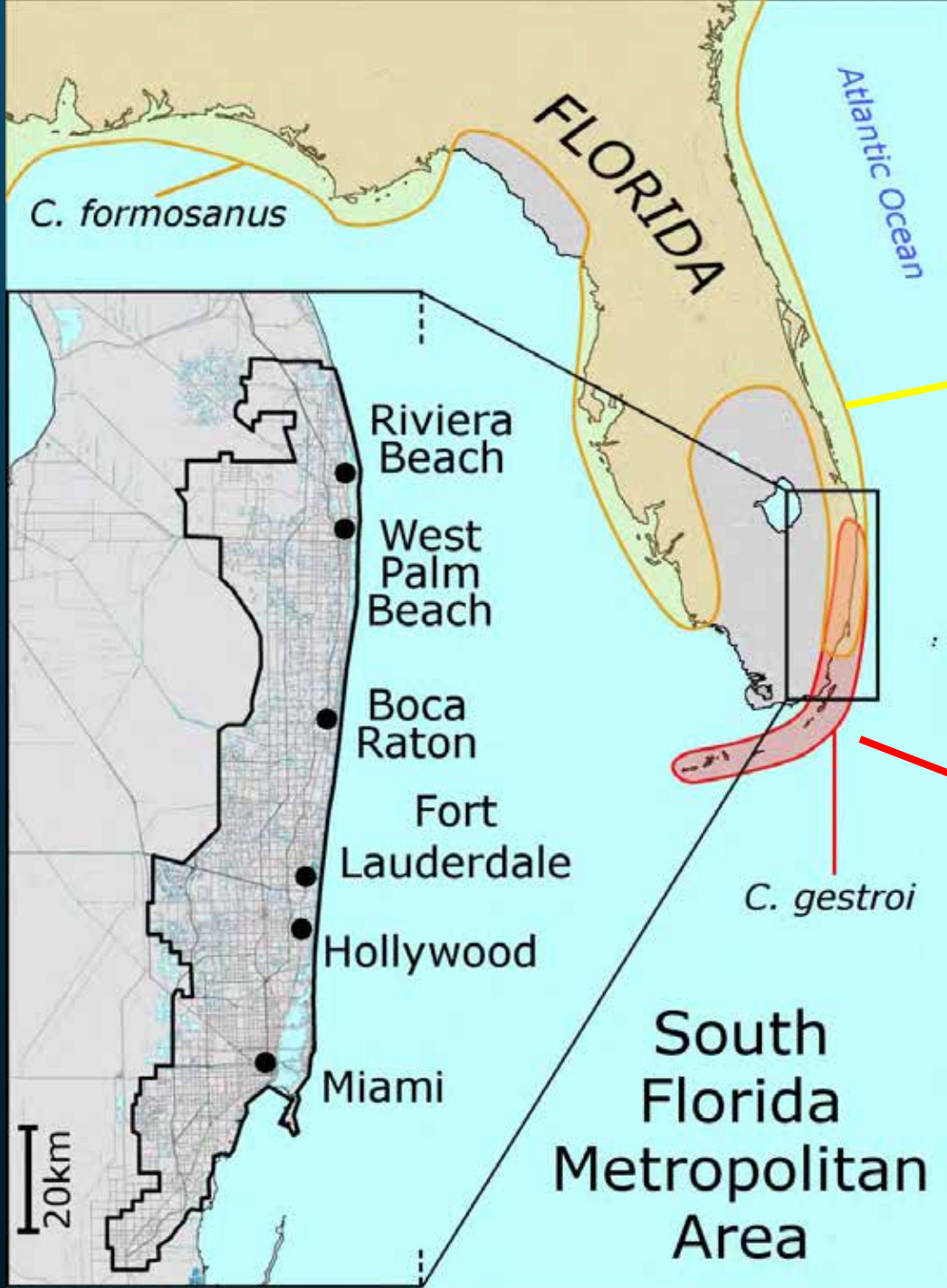
It can only be used for educational purpose only

The author does not endorse any of the product or company  
cited in this presentation

All references are used for example only  
and not cannot be interpreted as a referral

*Coptotermes*





*C. formosanus*

FLORIDA

Atlantic Ocean

*C. formosanus*

Riviera Beach

West Palm Beach

Boca Raton

Fort Lauderdale

Hollywood

Miami

20km

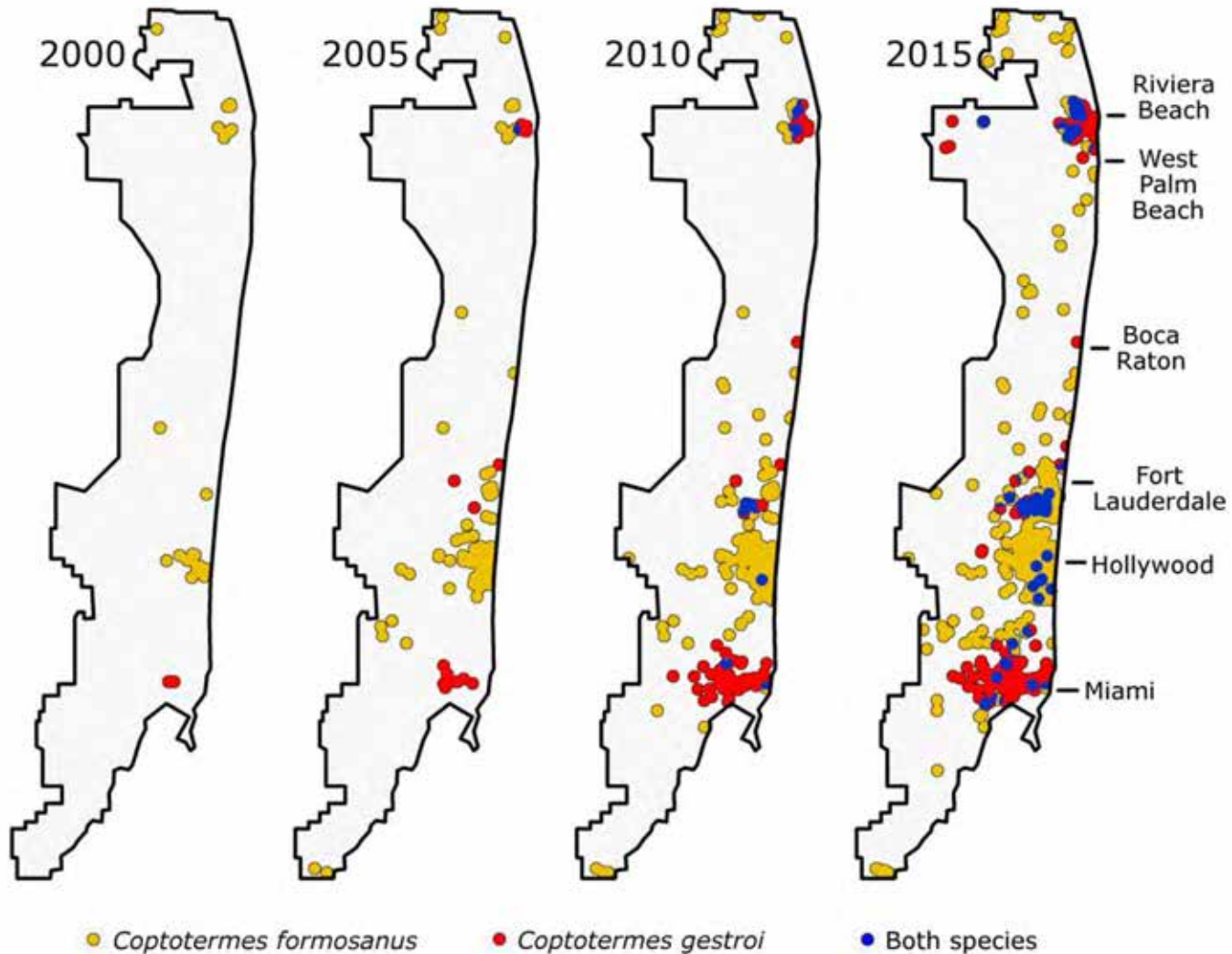
South Florida Metropolitan Area

*C. gestroi*

*C. gestroi*

# Monitoring Termite activity

Termite records in South Florida Metropolitan Area



# Impact of invasive *Coptotermes*







***Picture: Mike Wilson***



*Picture: Mike Wilson*





Gumbo Limbo





# Bald Cypress



Oak tree





Oak tree









Want to find invasive subterranean termites?



CHECK

FOR

TREES

## Subterranean termite IPM

*Coptotermes formosanus*

*Coptotermes gestroi*



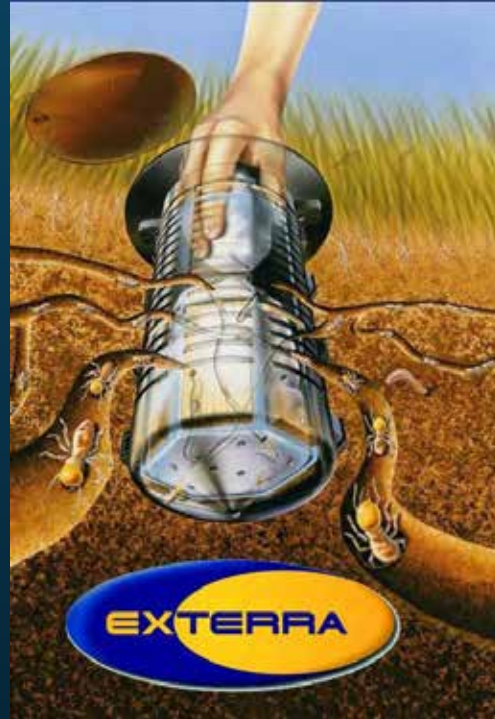
Large scale use of Liquide termiticides is not sustainable

→ Not IPM

# Subterranean termite IPM



Trelona Advance  
Termite Bait System



Exterra  
Baiting System



Sentricon  
Recruit HD  
Recruit AG

Foam formulation of  
a liquid termiticide?





90 days for colony elimination

Avocado tree









CITY OF FORT LAUDERDALE

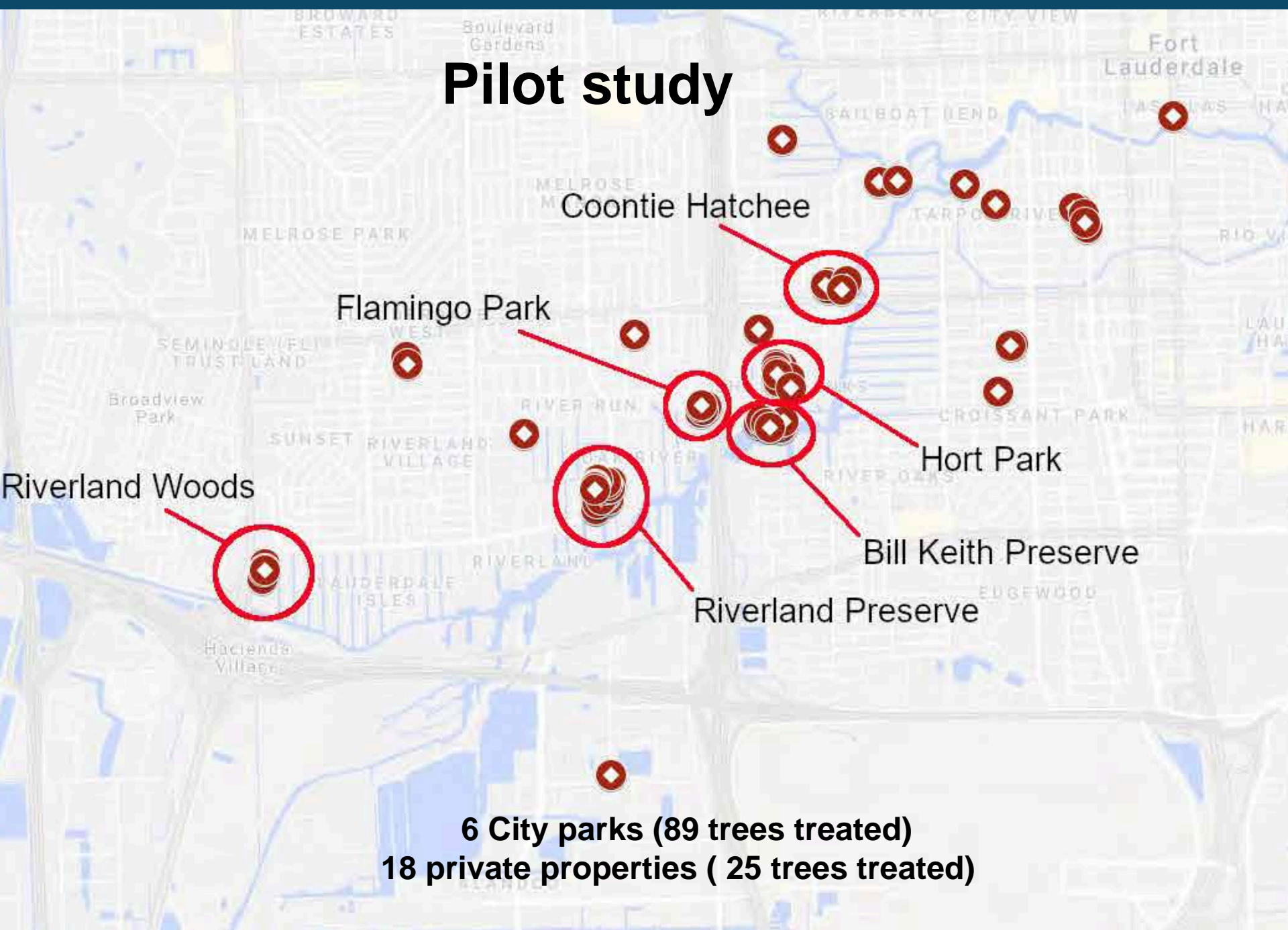


# Tree canopy protection pilot study



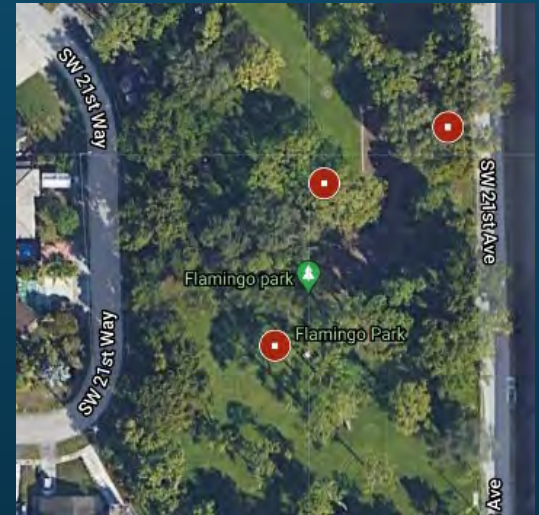
Modified bait formulation, under the AG label

# Pilot study

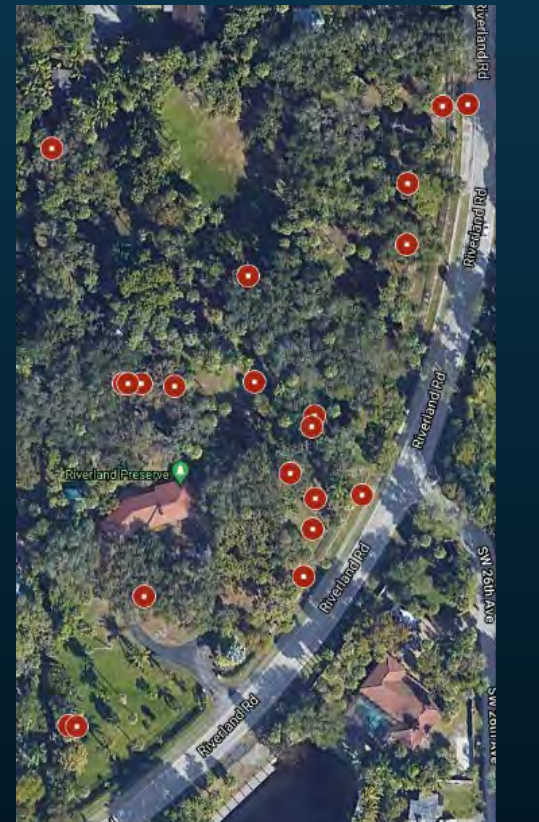


**6 City parks (89 trees treated)**  
**18 private properties ( 25 trees treated)**

# 6 parks + more trees



114 trees  
10.9 g of Noviflumuron



# Summary

**10.9 g** of active ingredient used

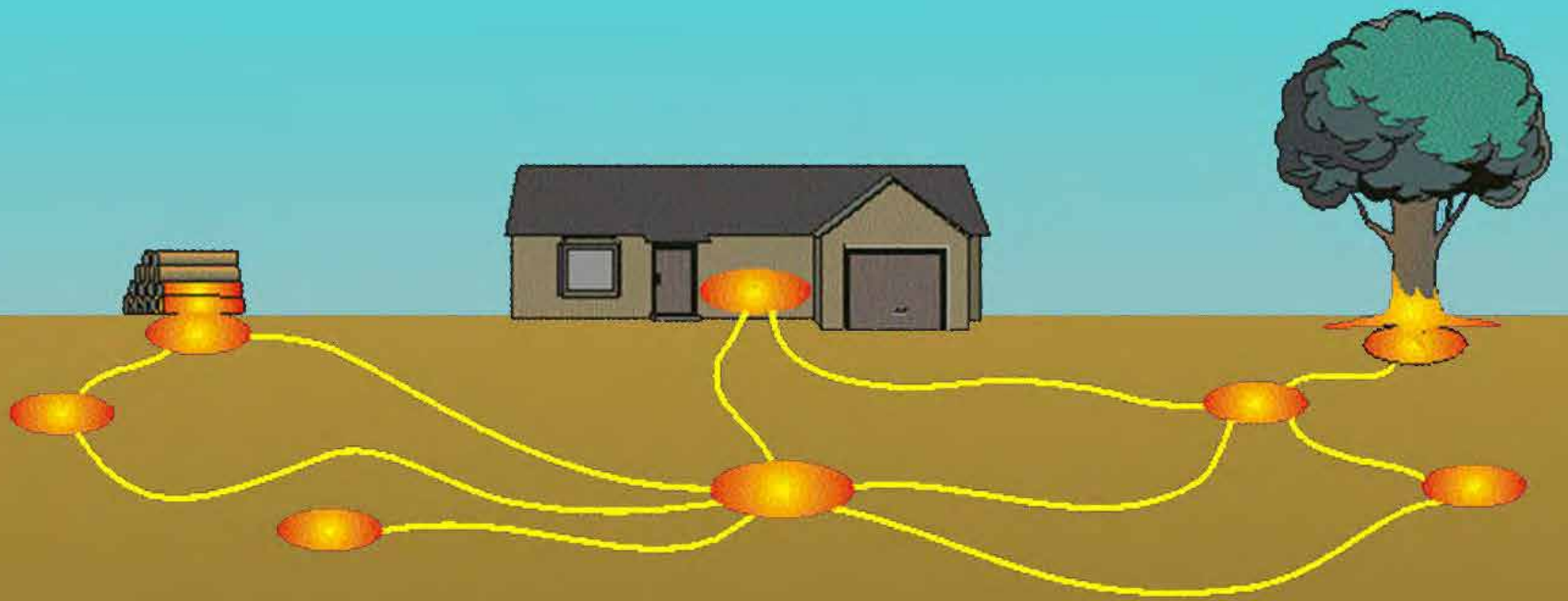
**Inaccessible to the public**

**Active ingredient is termite specific**

**Stand Alone ( Need for an Exception!?)**

# Tree inspection





# AG Baits as a solution for trees for colony elimination



## Inspection and early detection

→ Preventive protocol

→ Use of AG

- Reduces of use of pesticides
- Prevents structural damage by eliminating colonies early
- Saves infested trees
- Reduces the overall termite pressure in the area





**UF | IFAS**  
UNIVERSITY of FLORIDA

**Thomas Chouvinc**

Department of Entomology and Nematology  
Ft. Lauderdale Research and Education Center