



CITY OF FORT LAUDERDALE



Broward County  
Public Schools



**Project  
Proposal**

# **JOINT USE PARKS INITIATIVE**

**PARKS, RECREATION & BEACHES ADVISORY BOARD  
AUGUST 25, 2021**

*Partnership between City of Fort Lauderdale & Broward County Public Schools*

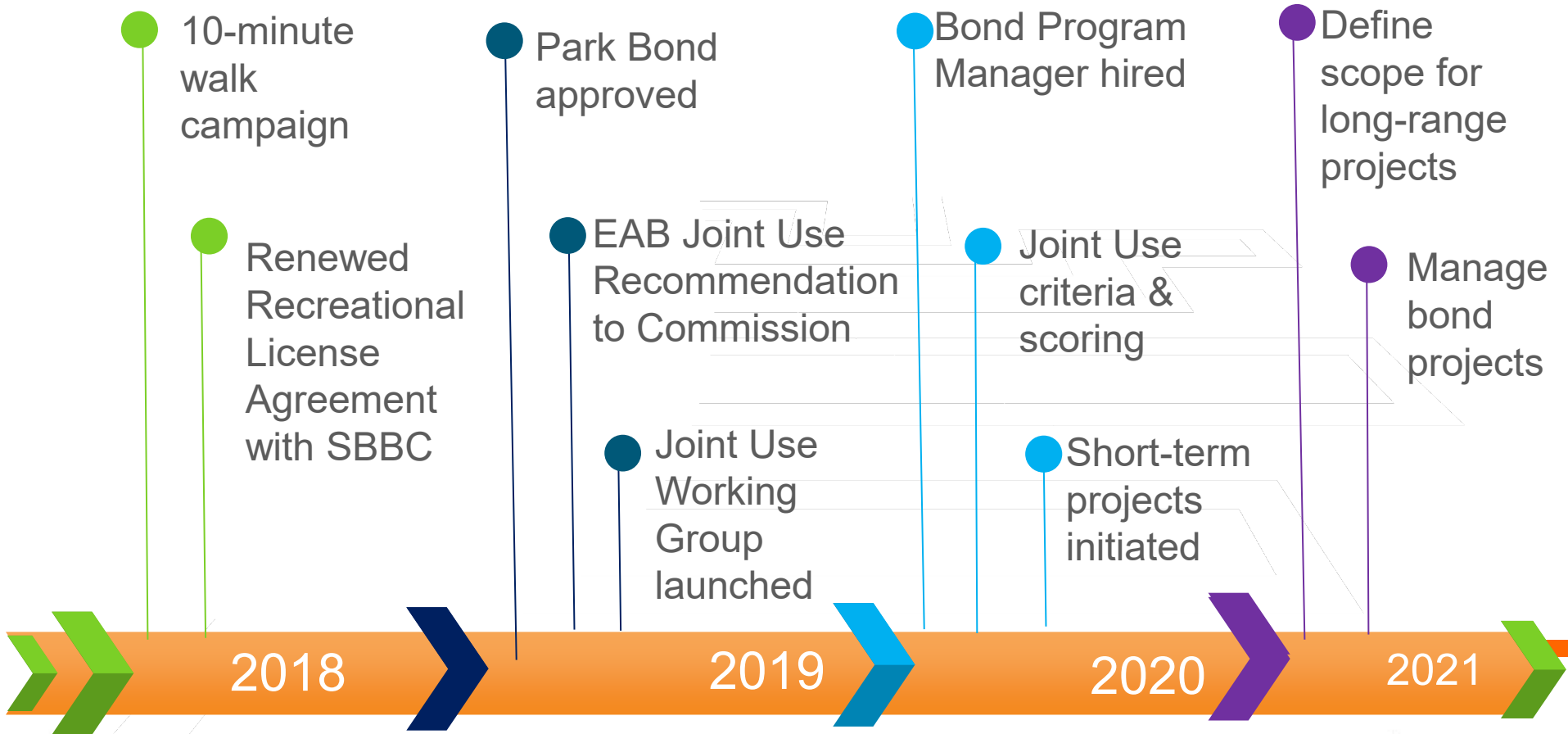




“ Promote the joint community and school use of all publicly-funded parks and recreation areas in the City of Fort Lauderdale ”

STRATEGIC INITIATIVE

# TIMELINE



# RECREATIONAL LICENSE AGREEMENT

## Recreational License Agreement

City of Fort Lauderdale and School Board of Broward County



**School  
Benefit**

**Community  
Benefit**

- Established in 1978
- Renewed in 2018 for 25 years
- Allows for resource sharing between school and community
- Safety requirements established
- Operational responsibilities defined
- 18 schools included; additional fencing required to make certain sites available

# VOTER APPROVED PARKS BOND

## \$200 Million Park Bond

Proposed project list based on Parks and Recreation Master Plan.



Joint Use  
Parks



City Parks



Acquisition

Proposed projects include existing and new joint use parks based on Master Plan.

Improvements to City parks and community center. Signature project in each Commission District.

Acquisition of new green space.



# GUIDING PRINCIPLES


---

**Vision:** A city where joint-use parks are established across Fort Lauderdale

## **Objectives**

- Build community
- Demonstrate smart government

## **Approach:**

- Make decisions so all parks and recreation resources are aligned to build community
  - City-wide plan and execution versus individual approach
  - Geographic equity
  - Transparent and well-informed process
  - Speed of execution
- 



# PRIORITIZING NEED & DEFINING PROJECT SCOPE

## Completed

Master Plan/Parks Bond Project List



EAB & PRBA Establish Guiding Principles for initiative



Joint Use Working Group



Public Input Meetings



## Next Steps



EAB Joint Use Proposal Review

Summer, 2021



PRBA Joint Use Proposal Review

Summer/Fall, 2021



Public Hearings

TBD

*Note:* Existing joint use parks will go through the Program Manager Task Order Process.



# CRITERIA – TO MEASURE NEED, VIABILITY & SUCCESS

Developed and validated with input from principals

Scoring intended to help prioritize “win-win” projects for school and community

Accounts for changes in need since Parks Master Plan

PROJECT CRITERIA & ASSESSMENT
<b>Community Need - Is there Community Need for a recreation area?:</b>
No City park within a "10 minute walk" per Fort Lauderdale spec? (1/2 mile from school)
Walkability challenges to nearby park (need to cross major highways, busy roads, water, other barrier requiring one to drive)
School site offers amenities not offered at nearby parks
Low quality and diversity of amenities in community
<b>SUB-SCORE: Community Need</b>
<b>Feasibility of School Site Design</b>
Direct access from street to the recreation area
Required fencing does not pose negatives to school design specs
Site offers large lot, corner lot, and/or unique features
<b>SUB-SCORE: Feasibility of School Site Design</b>
<b>Benefits to School Program and/or Design (not scored if low physical site viability)</b>
Project is in a high visibility area that adds to the overall aesthetics and curb appeal of the school
Project adds to the school's educational program/theme (examples include outdoor learning labs, marine science collection areas, educational signage, etc)
Project expands recreational opportunities for students
<b>SUB-SCORE: Benefits to School Program &amp; Design</b>
<b>ASSESSMENT OF CRITERIA BASED ON NEEDS &amp; FEASIBILITY</b>

# INPUT MEETINGS

- School sites visits
- Asset inventory
- Principal meetings
- Public meetings
- School Board meetings
- Monthly updates to  
Education Advisory Board



# Executive Summary

The Joint Use Working Group **recommends 15 schools for parks bond funding** based on the joint use scoring methodology and public input.

The budget proposal stays within the \$10,948,700 listed in the parks bond for joint use parks. **Scope of work adjustments** are proposed **based on the joint use scoring methodology, adjusted community need** since 2016 master plan **and in coordination with the School Board of Broward County.**

The proposal **increases the number of joint use parks** in the City of Fort Lauderdale and expands project scope in areas of highest need to promote **geographic equity.**



# Proposed New Projects

Projects not contemplated in initial parks bond list

School	Commission District	Budget	Rationale
Thurgood Marshall Elementary	3	\$400,000	<ul style="list-style-type: none"><li>Powerline road and Sunrise boulevard create walkability challenges to area parks</li></ul>
Rock Island Elementary	3	\$275,000	<ul style="list-style-type: none"><li>Creates community access to playground and large green space. Also benefits Dillard Elementary families due to school zoning</li></ul>
Harbordale Elementary	4	\$275,000	<ul style="list-style-type: none"><li>Increased community demand for park space</li></ul>
Dillard 6-12	3	\$100,000	<ul style="list-style-type: none"><li>Creates community access to tennis courts</li></ul>
<i>Sub-Total</i>		<i>\$1,050,000</i>	<i>Increase access to parks across City</i>



# Proposed Increased Project Scope

Projects included in initial parks bond list. Proposed increase due to need.

School	Commission District	Increase	Total Budget	Rationale
North Fork Elementary	3	\$300,000	\$785,000	<ul style="list-style-type: none"><li>Situated in park desert</li><li>Expansive property and unique water access create great potential</li></ul>
Stephen Foster Elementary	4	\$100,000	\$475,000	<ul style="list-style-type: none"><li>Situated in park desert</li><li>Nestled in neighborhood; anticipated high-use</li></ul>
Westwood Heights Elementary	3	\$200,000	\$475,000	<ul style="list-style-type: none"><li>High community demand</li><li>Creates community access to basketball courts, playground and other amenities</li></ul>
Stranahan High School	4	\$250,000	\$350,000	<ul style="list-style-type: none"><li>High community demand for recreational amenities</li><li>Expansive property creates great potential</li></ul>
<i>Sub-Total</i>		<i>\$850,000</i>	<i>\$2,085,000</i>	<i>Expands scope in park deserts/high need areas</i>

# Proposed Maintenance of Project Scope

No change from initial project list proposed.

School	Commission District	Total Budget	Rationale
Floranada Elementary	1	\$783,000	<ul style="list-style-type: none"><li>• Supports continued high usage for organized athletics</li></ul>
Lauderdale Manors	3	\$1,856,000	<ul style="list-style-type: none"><li>• Supports continued high usage of pool and community center</li></ul>
Sunset Park	3	\$1,029,000	<ul style="list-style-type: none"><li>• Supports continued high-usage of recreational spaces</li></ul>
Virginia Shuman Young Elementary	2	\$375,000	<ul style="list-style-type: none"><li>• Repurposing pavilion and lighting supports community request for shade cover</li></ul>
<i>Sub-Total</i>		<i>\$4,043,000</i>	<i>Initial project list aligned to need</i>

# Proposed Decrease of Project Scope

Proposed decrease from initial project list due to need and opportunity to expand portfolio within budget allocated.

School	Commission District	Decrease	Total Budget	Rationale
Croissant Park	4	(\$200,000)	\$2,420,000	<ul style="list-style-type: none"><li>Lower need for separate bathroom when competitive swim returns to Swimming Hall of Fame; current bathroom access meets need</li></ul>
Sunrise Middle	2	(\$725,000)	\$1,000,000	<ul style="list-style-type: none"><li>Lower need with addition of Bennett playground in 2020 &amp; upgraded turf fields at Holiday Park</li><li>Space cannot fit regulation field</li></ul>
Walker Elementary	3	(\$300,000)	\$350,700	<ul style="list-style-type: none"><li>Playground equipment is new and in good condition; upgrades scheduled for later in bond cycle</li></ul>
William Dandy Middle	3	(\$675,000)		<ul style="list-style-type: none"><li>Low need with access to diversity of amenities at Osswald Park</li><li>Site design challenges</li></ul>
<i>Sub-Total</i>		<i>(\$1,900,000)</i>	<i>\$3,770,700</i>	<i>Redistribute based on city-wide need</i>

# Site by Site Review: Proposed Project Scope

---



**Note:** Final designs will require approval by the School Board of Broward County.

# THURGOOD MARSHALL ELEMENTARY: JOINT USE PARK PROPOSAL



**Proposed Budget: \$400,000**

## **Proposed Project Scope**

- Playground installation
- Basketball court
- Walking trail

# ROCK ISLAND ELEMENTARY SCHOOL: JOINT USE PARK PROPOSAL



**Proposed Budget: \$275,000**

## **Proposed Project Scope**

- Playground installation
- Fencing



# HARBORDALE ELEMENTARY: JOINT USE PARK PROPOSAL



**Proposed Budget: \$275,000**

## **Proposed Project Scope**

- Playground updates
- Court resurfacing

# DILLARD 6-12: JOINT USE PARK PROPOSAL



**Proposed Budget:** \$100,000

**Proposed Project Scope**

- Tennis court resurfacing

# NORTH FORK ELEMENTARY: JOINT USE PARK PROPOSAL



**Proposed Budget: \$785,000**

## **Proposed Project Scope**

- Playground installation
- Walking path
- Outdoor learning laboratory

# STEPHEN FOSTER ELEMENTARY: JOINT USE PARK PROPOSAL



**Proposed Budget: \$475,000**

## **Proposed Project Scope**

- Playground updates: PK, K-2, 2nd-5<sup>th</sup>
- Soccer field
- Walking path with fitness equipment
- Sunshade

# WESTWOOD HEIGHTS ELEMENTARY: JOINT USE PARK PROPOSAL



**Proposed Budget: \$475,000**

## **Proposed Project Scope**

- Sunshade
- Playground updates
- Basketball resurfacing
- Walking trail

# STRANAHAN HIGH SCHOOL: JOINT USE PARK PROPOSAL



**Proposed Budget: \$350,000**

## **Proposed Project Scope**

- Tennis court resurfacing
- Basketball courts
- Fitness equipment

# FLORANADA JOINT USE PARK PROPOSAL

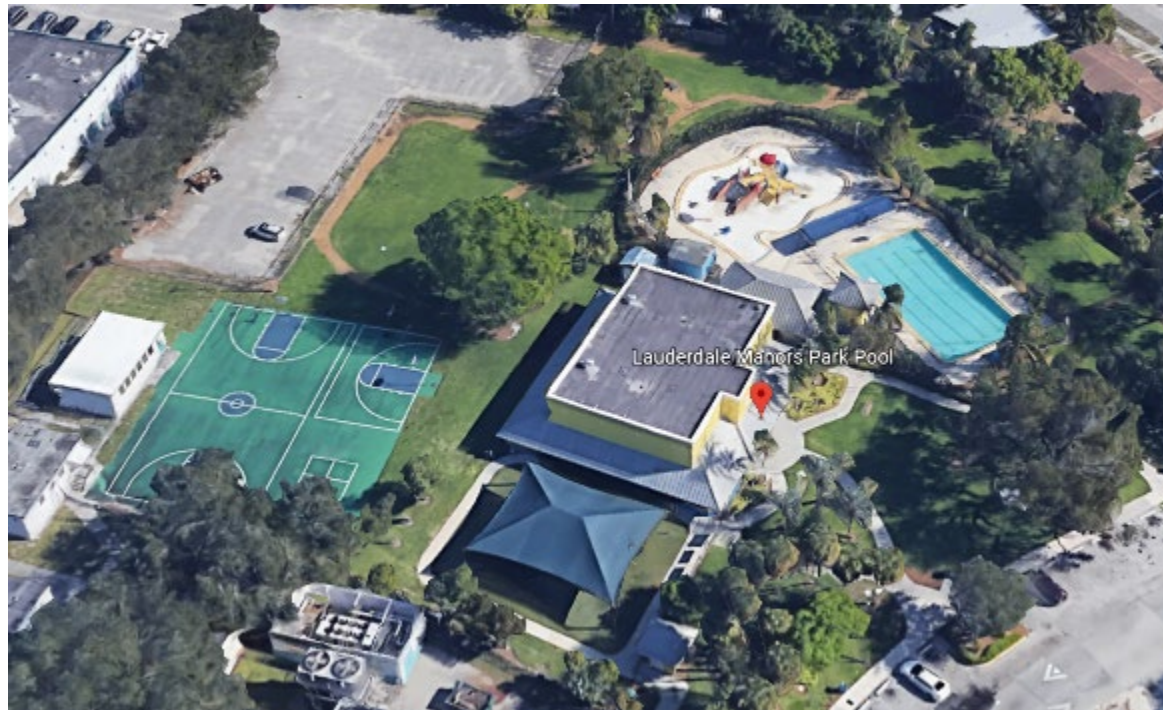


**Proposed Budget: \$783,000**

## **Proposed Project Scope**

- Playground
- Athletic field
- Restroom renovation
- Bleacher shade
- Site furnishings
- ADA improvements

# LAUDERDALE MANORS: USE PARK PROPOSAL



**Proposed Budget: \$1,856,000**

## **Proposed Project Scope**

- Pool renovations
- Community center renovations
- Playground/surfacing/shade
- Water playground replacement
- Solar panels
- ADA improvements

# SUNSET PARK JOINT USE: PARK PROPOSAL



**Proposed Budget: \$1,029,000**

## **Proposed Project Scope**

- Benches
- Bike racks
- Athletic field lighting upgrade
- Playground replacement
- Signage
- Fencing
- Lighting
- ADA improvements



# VIRGINIA SHUMAN YOUNG ELEMENTARY: JOINT USE PARK PROPOSAL



**Proposed Budget: \$375,000**

## **Proposed Project Scope**

- Sunshade
- Playground updates



# CROISSANT PARK JOINT: USE PARK PROPOSAL



**Proposed Budget: \$2,420,000**

## **Proposed Project Scope**

- Community Center Renovations
- Ball field lighting
- Water playground replacement
- Outdoor fitness equipment
- Solar panels
- ADA improvements
- Basketball
- Playground

# SUNRISE MIDDLE SCHOOL: JOINT USE PARK PROPOSAL



**Proposed Budget: \$1,000,000**

## **Proposed Project Scope**

- Pool chiller
- Field upgrades
- Track upgrades
- Fencing
- Benches & picnic tables

# WALKER ELEMENTARY: JOINT USE PARK PROPOSAL



**Proposed Budget: \$350,700**

## **Proposed Project Scope**

- Playground replacement
- Bike racks
- Picnic tables